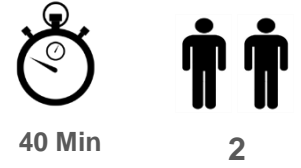


**Vehicle:** Ford Ranger  
**Product:** RollaTop  
**Part No:** RANT6/7 DC RC V1 B



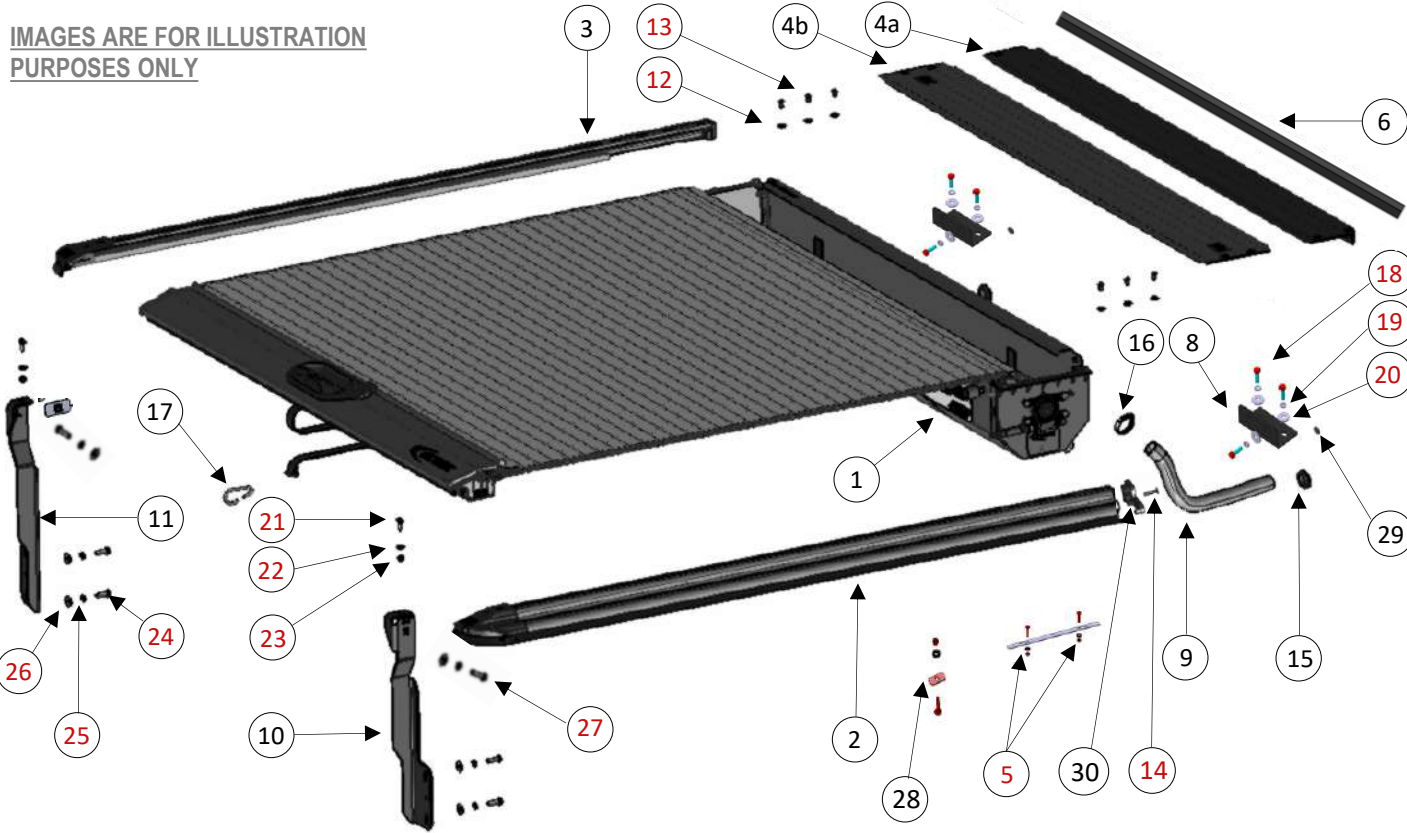
**VERY IMPORTANT**

PLEASE READ THESE INSTRUCTIONS CAREFULLY BEFORE COMMENCING WITH FITMENT

**Rev No:** 003 **Date:** 17-10-2024 **Doc No:** FI000657 Rev3

**TORQUE SETTINGS:** M5 = 5 Nm M6 = 9 Nm M8 = 22 Nm M10 = 42 Nm M12 = 73 Nm M16 = 178 Nm

**IMAGES ARE FOR ILLUSTRATION PURPOSES ONLY**



**ASSEMBLY CONTENT**

- 1 1x - AS03271 - COLLECTION CYLINDER UNIT
- 2 1x - AS03190 - SIDE RAIL RH 1465mm
- 3 1x - AS03202 - SIDE RAIL LH 1465mm
- 4 1x - AS03238 - LID ASSEMBLY 1455mm
- 4a 1x - PE00084 - LID EXTRUSION FRONT
- 4b 1x - PE00090 - LID EXTRUSION BACK
- 5 1x - AF00266 - SIDE RAIL ASSEMBLY FASTENER SET
- 6 1x - XM0920 - FOAM STRIP - 30mmX30mmX1600mm
- 7 1x - FK00727 - FITTING KIT - RANGER T6-T7

**FASTENERS (FS00531 REV1)**

- 18 6x - RM00302 - M6 x 25 HEX HEAD SCREW
- 19 6x - RM00138 - 6mm SPRING WASHER
- 20 6x - RM00107 - 6mm WASHER
- 21 2x - RM00741 - M6x25 CUP SQUARE
- 22 2x - RM00286 - M6 x 16 x 1.6 FLAT WASHER
- 23 2x - RM00106 - M6 NYLOCK NUT
- 24 4x - RM00122 - M8 x 25 HEX HEAD SCREW
- 25 4x - RM00113 - M8 HD SPRING WASHER
- 26 4x - RM00605 - M8 x 22 x 1.6 FLAT WASHER
- 27 2x - RM00115 - M8 NYLOCK NUT

**CONTENTS (FK00727 REV4)**

- 8 2x - AS03789 REV1 - BRACKET ASSEMBLY
- 9 2x - PG00242 - CLEAR PVC TUBE
- 10 1x - PS05859 REV1 - RH REAR LOADBODY BRACKET
- 11 1x - PS05860 REV1 - LH REAR LOADBODY BRACKET
- 28 2x - PS06993 - M6 NUT PLATE
- 38 6x - PS06697-REV0 - 3mm SPACER
- 29 2x - PP00495 - END CAP PLUG
- 30 1x - PP00492 - RAIL END CAP RH
- 31 1x - PP00493 - RAIL END CAP LH
- 32 1x - XM0958 - KITTING BOX (900mm X110mm X60mm)
- 33 1x - XM0892 - ZIP LOCK BAG (40mm x 60mm)
- 34 1x - **FI00657 REV3 - FITTING INSTRUCTION**
- 35 1x - FS00528 REV1 - FASTENER SET
- 36 1x - FS00531 REV1 - FASTENER SET
- 37 1x - FS00551 REV1 - FASTENER SET

**FASTENERS (FS00528 REV1)**

- 12 6x - RM00347 - M6x16x1.6 FLAT WASHER
- 13 6x - RM00484 - M6x12 BUTTON HEAD CAP SCREW
- 14 2x - RM00650 - M5x30 COUNTERSUNK SET SCREW

**FASTENERS (FS00551 REV1)**

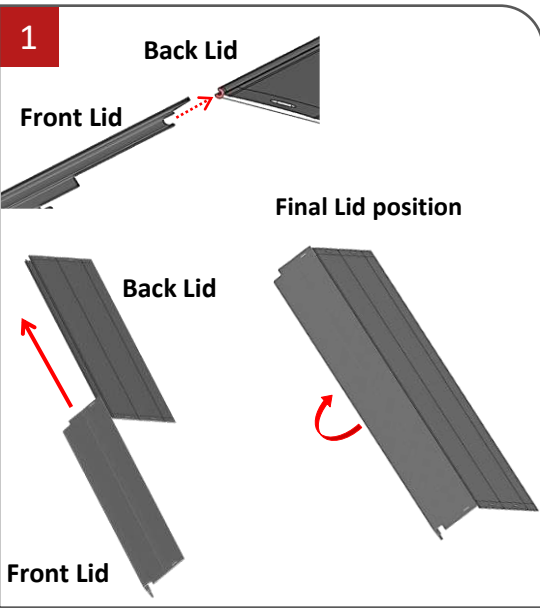
- 15 2x - XM0772 - GROMMET
- 16 2x - XM0769 - HOSE CLAMP
- 17 1x - XM0768 - CARABINER

**TOOLS REQUIRED**

- Stanley knife / scissors
- 10mm & 13mm spanner
- 4mm / 5mm / 6mm Allen key sockets
- Torque set
- Drill & 32.0mm hole saw
- Loctite 243
- Socket set
- Tape measure

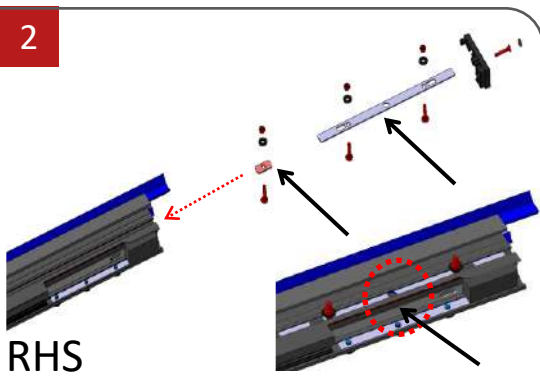
**PACKER:** \_\_\_\_\_

**DATE:** D M Y



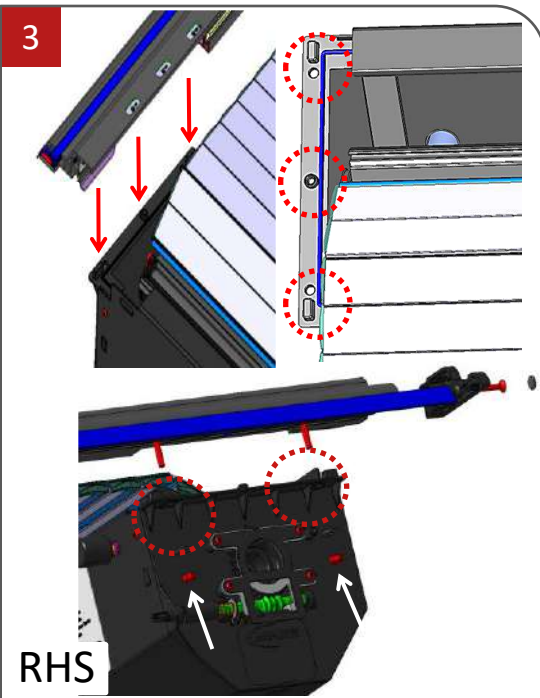
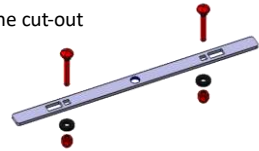
**Figure 1**

- Unpack the Rollatop kit and check that contents have been correctly supplied.
- Align the front lid and back lid to along the two pieces to interlock. Slide the front lid along the back lid until it is flush with the opposite side.
- Rotate the front lid until it locks into place with the back lid and both lids are flat.



**Figure 2**

- Locate & assemble the M6x25 CUP SQUARE bolts with the square holes in the plates before sliding them into the slot on the underside of the side rail.
- Insert PS06993 (short) first followed by PS06994 (Long)
- Slide the canister locking plate so the centre hole aligns with the cut-out round notch on the underside of the Aluminium profile.

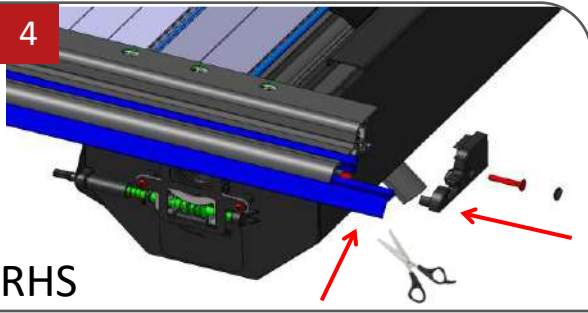


**Figure 3**

- Locate the 3 mounting points on the RHS of the canister.
- Feed the Slats and the Lock housing into the Side rail channel.
- Position the RH Side rail above the canister where the canister locking plate aligns with the 3 canister mounting points.
- Secure the Side rail with two M6 lock nuts and washers.
- **Repeat Steps 2 & 3 on the LHS**

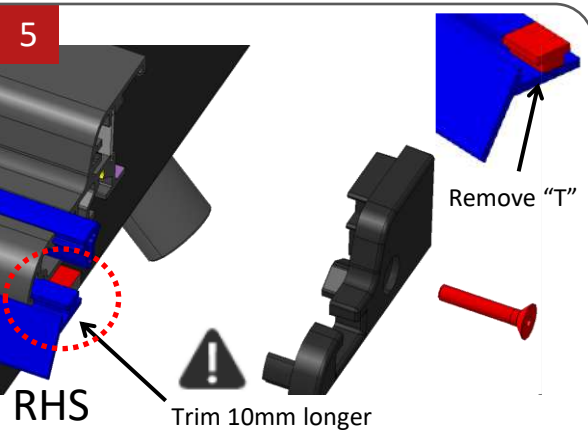
**WARRANTY**

1. Please note that modifications or alterations made to any product manufactured by Maxe to enable fitment in conjunction with other vehicle accessories including modifications made to fit lift kits, tonneau covers, etc. and including the any trimming of bars, will void any claims against the manufacturer.
2. Fitment of a Maxe product must be carried out in accordance to the steps specified in the fitting instructions and the correct torque settings must be applied. Failure to comply with these fitting instructions will negate any claims against the manufacturer.
3. Claims will not be entertained if they result from normal wear and tear (e.g.. Stone chips, abrasive cleaning, industrial fallout resulting in contamination, etc.)



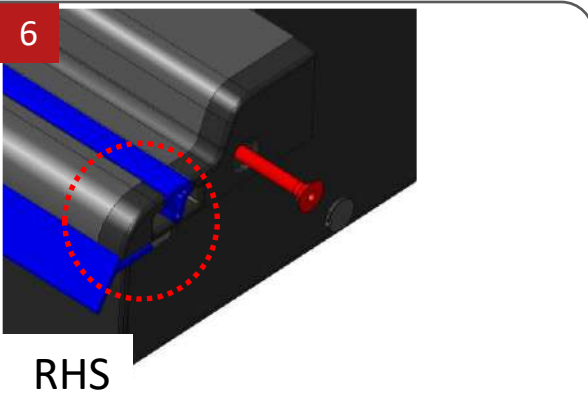
**Figure 4**

- **Trim off the excess sill rubber seal on the RH & LH Side rails.** (Trim so seal is 10mm longer than the aluminium)
- See Step 5 & 6 below.



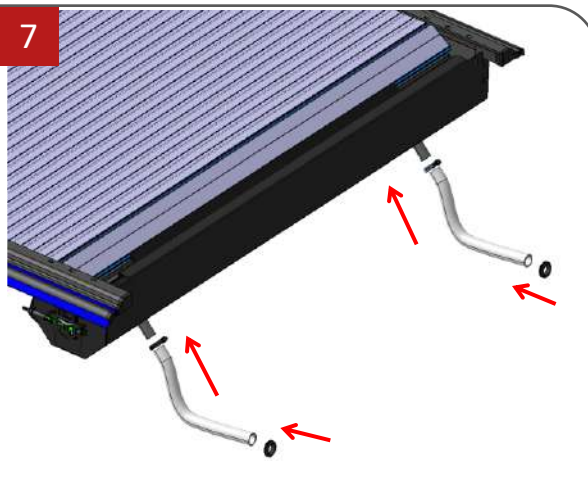
**Figure 5**

- **Trim off the excess sill rubber seal on the RH & LH Side rails.** (Trim so seal is 10mm longer than the aluminium)
- Next cut out the "T" section of the seal so that the Plastic cap fits into the Side rail.



**Figure 6**

- Once the "T" sections have been cut out on the RH & LH Side rails, place the plastic end caps (PP00492 & PP00493) on making sure that the trimmed seals sit underneath the plastic end caps.
- This gives a nice seal all the way along the Side rail assembly.
- If additional trimming is required, do so before fitting to vehicle.
- Next use the counter sunk M5x30mm screws from **FS00528** and the small round plastic cap to cover the screw head.
- **Repeat Steps on the LHS**

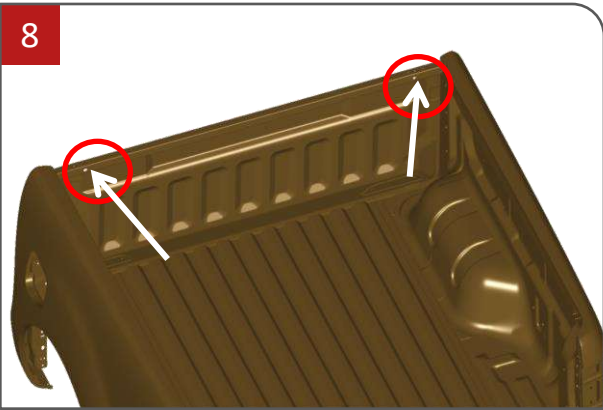


**Figure 7**

- Locate the two drainage outlet pipes on the front underside of the steel canister.
- Cover the two drainage outlet pipes with the supplied clear PVC tubing.
- Feed the supplied hose clamps from fastener set **FS00551** over the PVC tubes.
- Tighten the hose clamps where the PVC tubes meet the drainage pipes to create a seal.
- Locate the two rubber grommets supplied in the fastener set **FS00551**, fit them over the open ends of the PVC tubes.

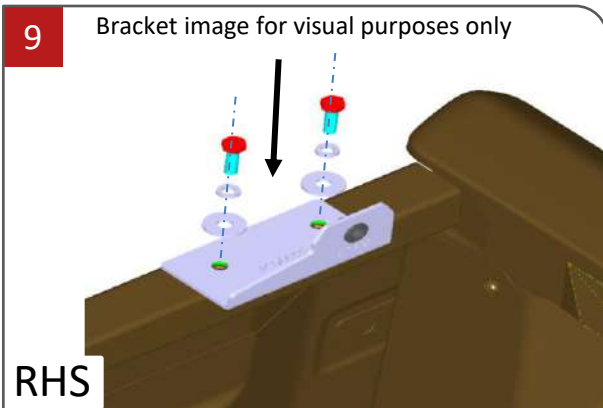
## WARRANTY

1. Please note that modifications or alterations made to any product manufactured by Maxe to enable fitment in conjunction with other vehicle accessories including modifications made to fit lift kits, tonneau covers, etc. and including the any trimming of bars, will void any claims against the manufacturer.
2. Fitment of a Maxe product must be carried out in accordance to the steps specified in the fitting instructions and the correct torque settings must be applied. Failure to comply with these fitting instructions will negate any claims against the manufacturer.
3. Claims will not be entertained if they result from normal wear and tear (e.g.. Stone chips, abrasive cleaning, industrial fallout resulting in contamination, etc.)



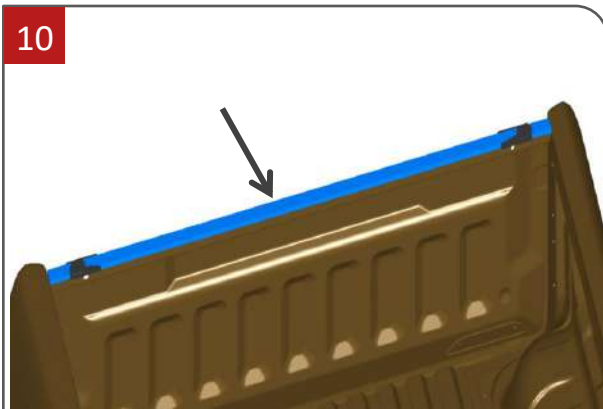
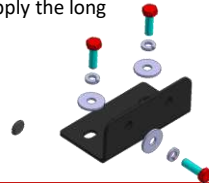
**Figure 8**

- Before applying the front brackets, wipe the top surface of the bin sill with thinners or a surface preparation cleaner to ensure the surface is clean.



**Figure 9**

- Place the two front brackets over the two M6 holes and tighten down with the M6x20mm Hex bolts, spring washers and washers from fastener set **FS00531**.
- **Figure 9** illustrates the right-hand side bracket.
- After both the RH & LH front brackets have been installed apply the long foam strip as shown in **Figure 10** below.



**Figure 10**

- Stick down the long foam strip (30mmx30mm) over both front brackets and trim off extra length.
- Be sure to place the foam strip so that the RH & LH side lengths are equal.
- Later on, the Side rails will be placed on top of this foam seal to create a barrier for water resistance.

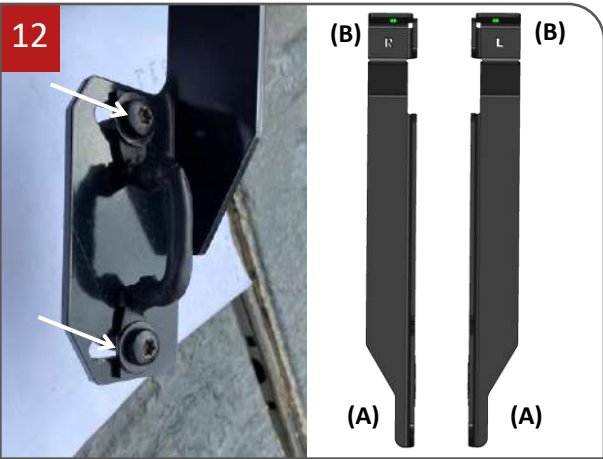


**Figure 11**

- Locate the tie down hooks on the inside of the bin at the LH and RH side of the tail gate.
- If the bolts of the hooks are covered by rubberising, then remove rubberising by carefully cutting the rubber with a Stanley blade to access the bolts.
- Unfasten the two M8 bolts and detached the tie down hook from the bin. The M8 bolts can be reused, or new bolts used which are supplied in **FS00531**.
- Repeat this process on the opposite side.

## WARRANTY

1. Please note that modifications or alterations made to any product manufactured by Maxe to enable fitment in conjunction with other vehicle accessories including modifications made to fit lift kits, tonneau covers, etc. and including the any trimming of bars, will void any claims against the manufacturer.
2. Fitment of a Maxe product must be carried out in accordance to the steps specified in the fitting instructions and the correct torque settings must be applied. Failure to comply with these fitting instructions will negate any claims against the manufacturer.
3. Claims will not be entertained if they result from normal wear and tear (e.g.. Stone chips, abrasive cleaning, industrial fallout resulting in contamination, etc.)



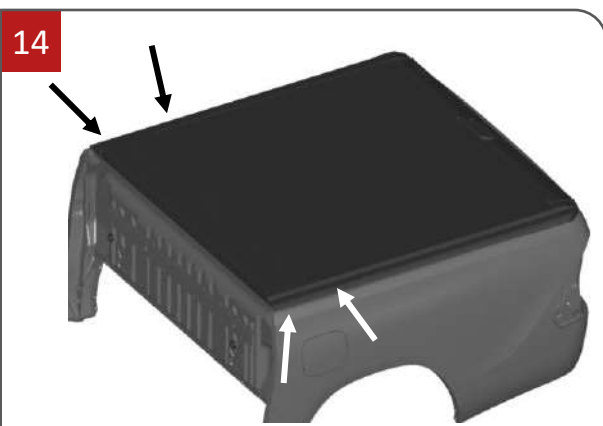
**Figure 12**

- Identify the LH load bracket which is shown by the L at location **(B)**. The RH load bracket is identified by an R at position **(B)**.
- Fit the preassembled tie down hook into the slots at position **(A)** of the LH load bracket.
- Repeat the above process for the RH load bracket which is identified by an R at position **(B)**.



**Figure 13**

- To mount the load bracket, use the original tie down hook mounting points.
- Mount the LH load bracket to the LH mounting point as shown below. Align the top of the load bracket with the top bin sill.
- Secure the load bracket by fastening the two M8 cap screws from fastener set **FS00531**.
- **Only drill 8mm holes once Step 18,2 has been completed.**
- Drill 8mm holes in the load bin at the top of the bracket repeat on both sides and place M8x25mm bolt, washers & M8 nut to prevent bracket from flexing – prevent the lid from opening while driving.
- **If you have a drop in plastic bin liner**, use the 3mm spacers supplied. 3x spacer per side between brackets and load bin where the 8mm holes will be drilled.
- Repeat this process on the process on the RH load bracket to the RH mounting point.



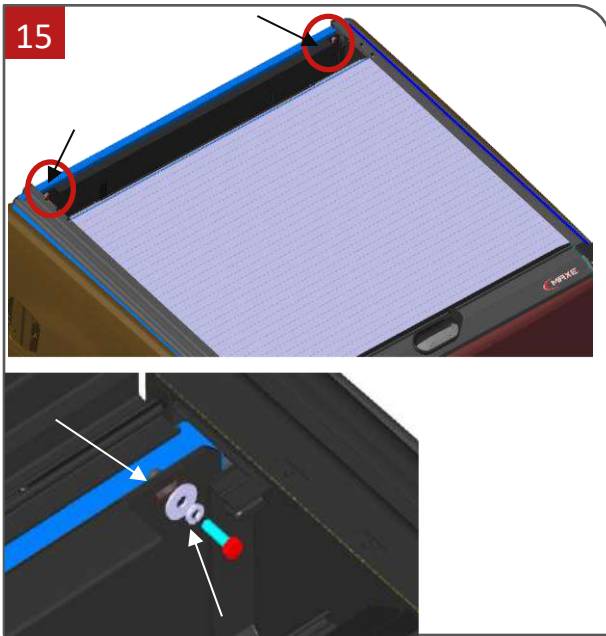
**Figure 14**



- **This step requires two people, lift the preassembled Rollatop over the bin of the vehicle with a person on either side and the Canister at the front of the bin.**
- Lift the preassembled Rollatop in the areas shown in **Figure 14**.
- Align the Canister with the front bin sill and the side rails with the side bin sills.
- Lower the assembly into position ensuring each corner of the assemble meets the corners of the bin sill.

**WARRANTY**

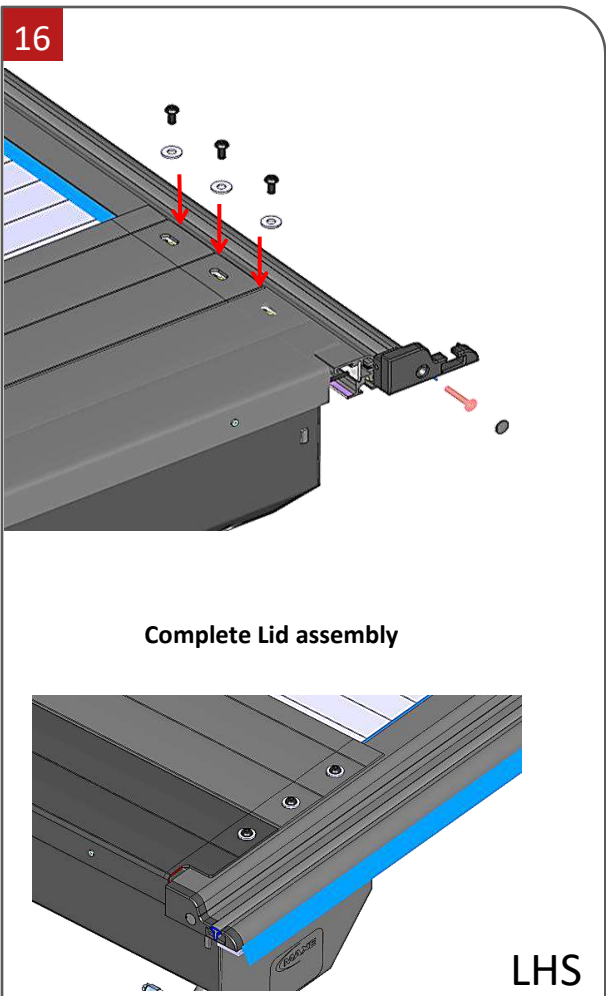
1. Please note that modifications or alterations made to any product manufactured by Maxe to enable fitment in conjunction with other vehicle accessories including modifications made to fit lift kits, tonneau covers, etc. and including the any trimming of bars, will void any claims against the manufacturer.
2. Fitment of a Maxe product must be carried out in accordance to the steps specified in the fitting instructions and the correct torque settings must be applied. Failure to comply with these fitting instructions will negate any claims against the manufacturer.
3. Claims will not be entertained if they result from normal wear and tear (e.g.. Stone chips, abrasive cleaning, industrial fallout resulting in contamination, etc.)



**Figure 15**

**Fitment on to the front load body brackets**

- Align the slots on the front of the Collection cylinder to the brackets installed in **Step 9**.
- Tighten the Collection cylinder to the brackets with the two M6x25mm Hex bolts, spring washers and washers from fastener set **FS00531**.
- Once completed the lid assembly can be installed into position on top of the Rollatop.



**Figure 16**

- Using the supplied lid fastener set **FS00528** to secure the Lid to the Side rails.
- Using the three M6x12mm button head cap screws and washers for each side, tighten down the Lid on either side.

**WARRANTY**

1. Please note that modifications or alterations made to any product manufactured by Maxe to enable fitment in conjunction with other vehicle accessories including modifications made to fit lift kits, tonneau covers, etc. and including the any trimming of bars, will void any claims against the manufacturer.
2. Fitment of a Maxe product must be carried out in accordance to the steps specified in the fitting instructions and the correct torque settings must be applied. Failure to comply with these fitting instructions will negate any claims against the manufacturer.
3. Claims will not be entertained if they result from normal wear and tear (e.g.. Stone chips, abrasive cleaning, industrial fallout resulting in contamination, etc.)

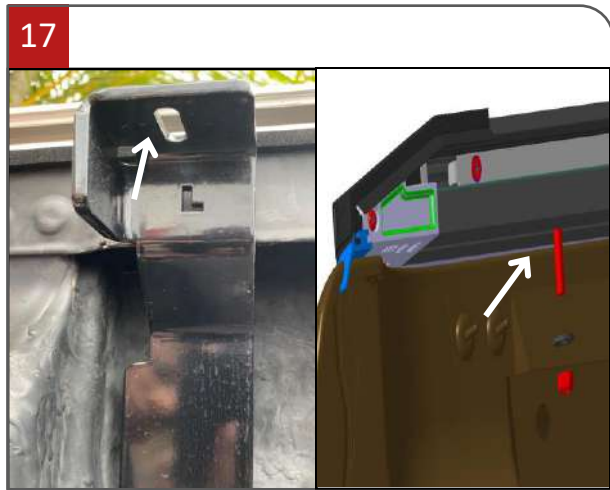


Figure 17

- Locate the RH side and LH side rear brackets
- Locate the slot on the underside of the Side rail.
- Find the M6x25 CUP SQUARE bolt and feed the bolt through the slot at the top of the bracket, place a washer and M6 locknut on.
- Fasten the rear brackets using the M6 locknut.
- Fasten the M8 bolts once **Step 18.2** is completed
- Repeat the above steps for the opposite rear bracket.

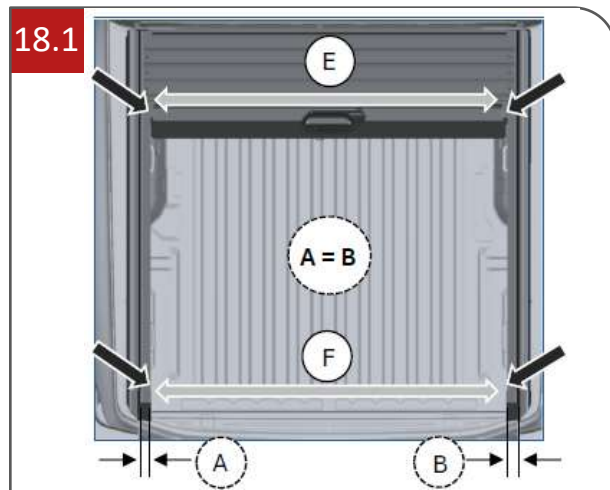
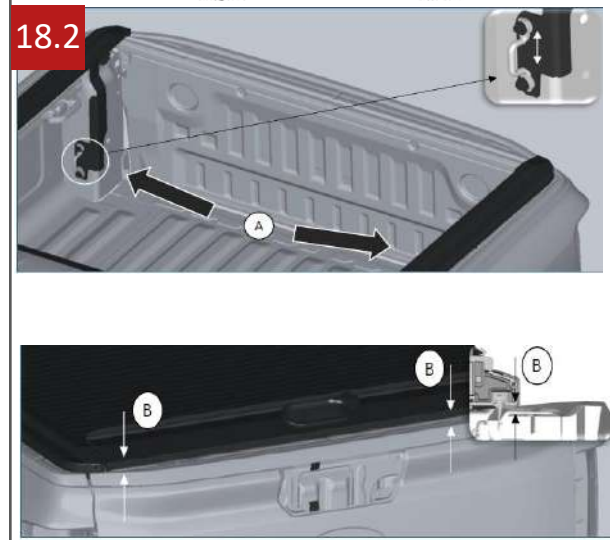


Figure 18

- Before fully tightening the rear brackets measure the internal width of the Side rails.
- Measure between the side rail just after the fixed Lid profile.
- Use this measurement to re-align the side rails at the back.
- Ensure that measurement E = F.
- See **Table 1** for standard measurements. (E=F)
- RollaTop is centred (A=B).

Table 1	
Standard side rail cross measurements	
Vehicle:	Millimetre (mm)
Ford Ranger T6 / T7	1400 mm
Toyota Hilux	1400 mm
Isuzu D-Max RG06	1430 mm
P-Series GWM	1405 mm
Mazda BT50	1430 mm
Mahindra Karoo	1400 mm
Ford Ranger P703	1320 mm
Nissan Navara H60	1360 mm
VW Amarok J73	1320 mm



- Ensure that the vertical gap between the underside of the rear profile and the top surface of the tailgate in a closed position is 10mm as shown in **Figure 18.2**.
- **If this gap isn't correct opening & closing of the tailgate & Rollatop will be difficult.**

## WARRANTY

1. Please note that modifications or alterations made to any product manufactured by Maxe to enable fitment in conjunction with other vehicle accessories including modifications made to fit lift kits, tonneau covers, etc. and including the any trimming of bars, will void any claims against the manufacturer.
2. Fitment of a Maxe product must be carried out in accordance to the steps specified in the fitting instructions and the correct torque settings must be applied. Failure to comply with these fitting instructions will negate any claims against the manufacturer.
3. Claims will not be entertained if they result from normal wear and tear (e.g.. Stone chips, abrasive cleaning, industrial fallout resulting in contamination, etc.)

19



Figure 19

- Open and close the Rollatop & tailgate to ensure free movement.

What to do if the Rollatop gets stuck during opening or closing:

- Check the height setting of the rear brackets.
- Check the cross dimensional measurements. See **Table 1** in **Step 18**.
- Check gap between tailgate top and underside of rear aluminium profile. This should be not less than 10mm.
- Lastly the tension spring can be set. See **Step 21**

**See troubleshooting manual for in-depth solutions.**

20



Figure 20

- Locate the position of the grommets on this inside of the bin against the front wall as shown in **Figure 20**.
- Drill through the bin wall to create a 32,0mm hole alternatively if your vehicle has rubber grommet inserts use a Stanley blade to cuts an "X" shape hole.
- The original vehicle grommets can be used or replaced with the supplied grommets from the Kitting package.
- Feed the clear PVC tubes through the holes / grommets to allow for drainage.
- Place the carabiner hook onto D-shackle at the end of the draw chord & attach to rear bracket.

21

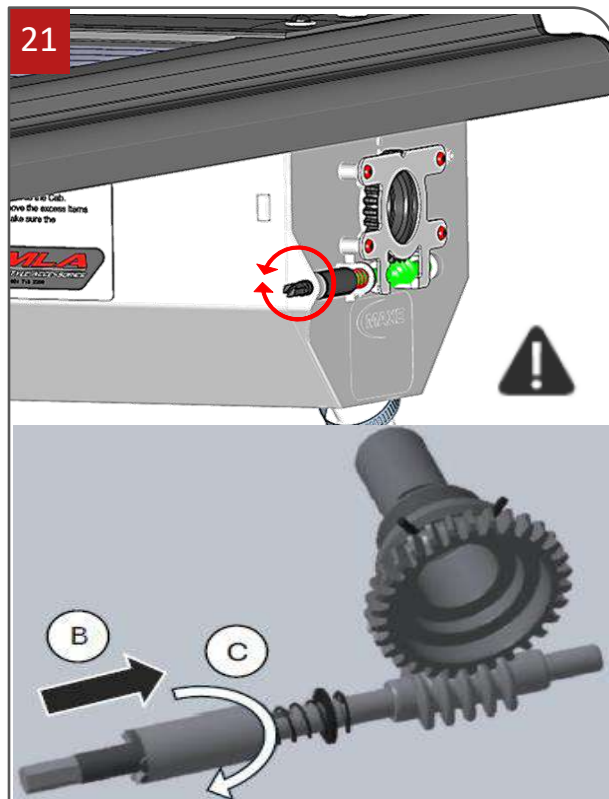


Figure 21



- **Overtightening the main spring will cause damage to the Rollatop. Before tightening it further, make sure nothing else is preventing the Rollatop from operating correctly.**
- Adjusting the main spring in clockwise rotation will increase the tension and make manually closing the cover harder but opening the cover will be easier.
- Then if the opposite is done, adjusting the spring in an anti-clockwise rotation the tension shall be reduced making the cover easier to manually close but opening will become semi-automatic / manually assisted too fully manual.
- **Please note reducing the tension of the main spring too much will cause the Rollatop to be noisy as tension is released the slats become free to bump into the collection cylinder casing & fixed lid. Furthermore, when opening the Rollatop the slats will bunch up and jam during opening due to not enough tension on the main spring.**
- Adjust the tension in increments, a cordless drill with a 7mm socket may be used. Try rotating the index tensioning pin by ten (10) rotations and the try closing and opening the Rollatop. If the result isn't satisfactory then try adjusting the tension further.
- **If damage has been done and the collection cylinder tensioning system needs to be replaced. Please contact Maxe or your dealer for replacement parts.**

## WARRANTY

1. Please note that modifications or alterations made to any product manufactured by Maxe to enable fitment in conjunction with other vehicle accessories including modifications made to fit lift kits, tonneau covers, etc. and including the any trimming of bars, will void any claims against the manufacturer.
2. Fitment of a Maxe product must be carried out in accordance to the steps specified in the fitting instructions and the correct torque settings must be applied. Failure to comply with these fitting instructions will negate any claims against the manufacturer.
3. Claims will not be entertained if they result from normal wear and tear (e.g.. Stone chips, abrasive cleaning, industrial fallout resulting in contamination, etc.)