

Vehicle: MAHINDRA D/C PICK UP

Product: ROLLATOP

Part No: KARODCRTSMB

Rev No: 002 Date: 23-10-2024

Doc No: FI00707 Rev2



45 Min



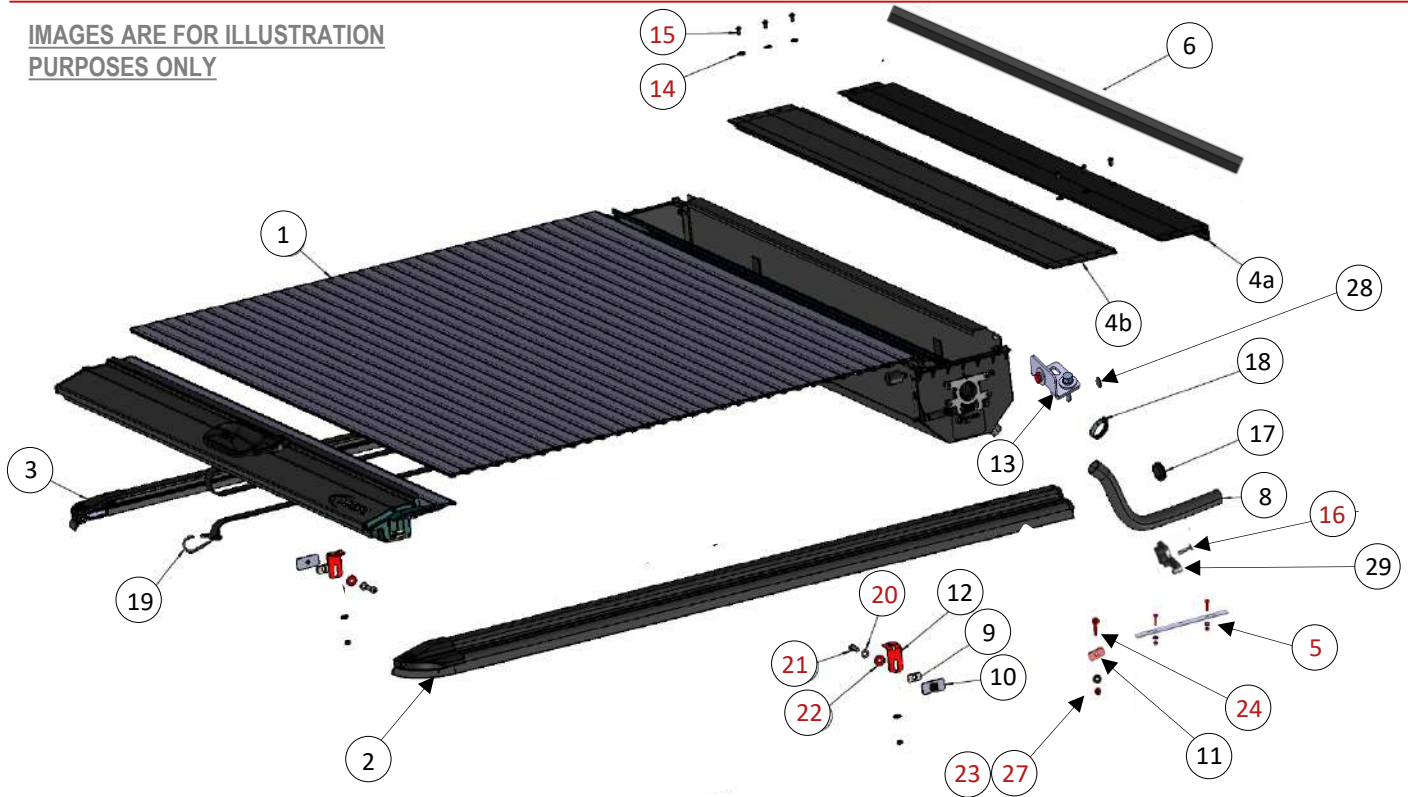
2

VERY IMPORTANT

PLEASE READ THESE INSTRUCTIONS CAREFULLY BEFORE COMMENCING WITH FITMENT

TORQUE SETTINGS: M5 = 5 Nm M6 = 9 Nm M8 = 22 Nm M10 = 42 Nm M12 = 73 Nm M16 = 178 Nm

IMAGES ARE FOR ILLUSTRATION PURPOSES ONLY



ASSEMBLY CONTENT

- 1 1x - AS03520 - COLLECTION CYLINDER UNIT
- 2 1x - AS03190 - SIDE RAIL RH 1465mm
- 3 1x - AS03202 - SIDE RAIL LH 1465mm
- 4 1x - AS03238 - LID ASSEMBLY 1455mm
- 4a 1x - PE00090 - LID EXTRUSION FRONT
- 4b 1x - PE00084 - LID EXTRUSION BACK
- 5 1x - AF00266 - SIDE RAIL ASSEMBLY FASTENER SET
- 6 1x - XM0920 - FOAM STRIP - 30mmX30mmX1600mm
- 7 1x - FK00889 - FITTING KIT - MAHINDRA PICK-UP

FASTENERS (FS00595 REV1)

- 20 4x - RM00113 - M8 HD SPRING WASHER
- 21 4x - RM00122 - M8 x 25 HEX HEAD SCREW
- 22 4x - RM00605 - M8 x 22 x 1.6 FLAT WASHER
- 23 2x - RM00106 - M6 NYLOCK NUT
- 24 2x - RM00741 - M6 x 25 CUP SQUARE
- 25 2x - RM00302 - M6 x 20 HEX HEAD SCREW
- 26 2x - RM00138 - 6mm SPRING WASHER
- 27 4x - RM00107 - 6mm WASHER

CONTENTS (FK00889 REV2)

- 8 2x - PG00362 - CLEAR PVC TUBE (630mm)
- 9 2x - PS06573 - 5mm SPACER
- 10 2x - AS01501 REV1 - M8 NUT PLATE ASSY
- 11 2x - PS06993 - M6 NUT PLATE
- 12 2x - PS06565 REV1 - MOUNTING BRACKET
- 13 2x - AS03959 REV0 - FRONT BRACKET ASSEMBLY
- 28 2x - PP00495 - END CAP PLUG
- 29 1x - PP00492 - RAIL END CAP RH
- 30 1x - PP00493 - RAIL END CAP LH

FASTENERS (FS00528 REV1)

- 14 6x - RM00347 - M6 x 16 x 1.6 FLAT WASHER
- 15 6x - RM00484 - M6 x 12 BUTTON HEAD CAP SCREW
- 16 2x - RM00650 - M5 x 30 COUNTERSUNK SET SCREW

FASTENERS (FS00551 REV1)

- 17 2x - XM0772 - GROMMENT
- 18 2x - XM0769 - HOSE CLAMP
- 19 1x - XM0768 - CARABINER

- 31 1x - XM0958 - KITTING BOX (900mm X110mm X60mm)
- 32 1x - XM0892 - ZIP LOCK BAG (40mm x 60mm)
- 33 1x - FI00707 REV2 - FITTING INSTRUCTION
- 34 1x - FS00551 REV1 - FASTENER SET
- 35 1x - FS00528 REV1 - FASTENER SET
- 36 1x - FS00595 REV1 - FASTENER SET

TOOLS REQUIRED

- Stanley knife / scissors
- 10mm & 13mm spanner
- 4mm / 5mm / 6mm Allen key sockets
- Torque set
- Drill & 32.0mm hole saw
- Loctite 243
- Socket set
- Tape measure

PACKER: _____

DATE: D M Y

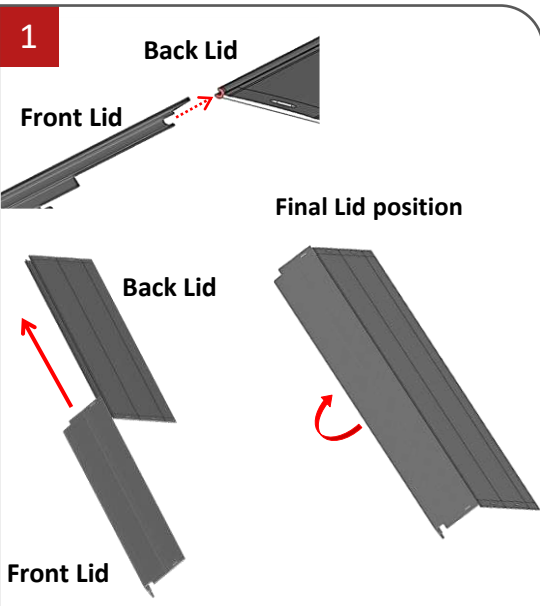


Figure 1

- Unpack the Rollatop kit and check that contents have been correctly supplied.
- Align the front lid and back lid to along the two pieces to interlock. Slide the front lid along the back lid until it is flush with the opposite side.
- Rotate the front lid until it locks into place with the back lid and both lids are flat.

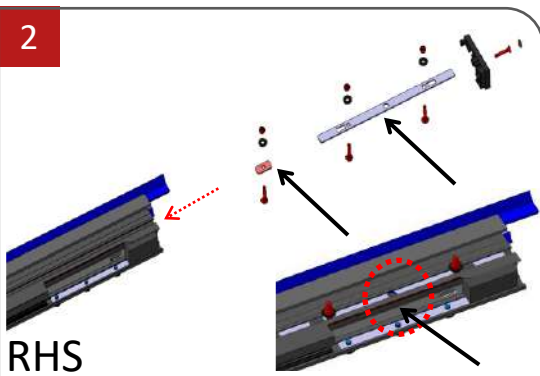


Figure 2

- Locate & assemble the M6x25 CUP SQUARE bolts with the square holes in the plates before sliding them into the slot on the underside of the side rail.
- Insert the PS06993 (short) plate first followed by PS06994 (Long) plate.
- Slide the canister locking plate so the centre hole aligns with the cut-out round notch on the underside of the Aluminium profile.

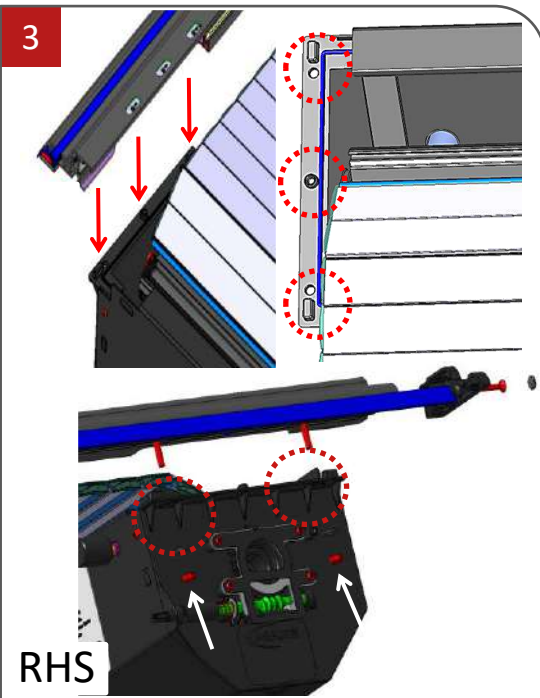
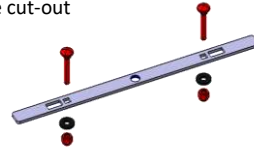


Figure 3

- Locate the 3 mounting points on the RHS of the canister.
- Feed the Slats and the Lock housing into the Side rail channel.
- Position the RH Side rail above the canister where the canister locking plate aligns with the 3 canister mounting points.
- Secure the Side rail with two M6 lock nuts and washers.
- **Repeat Steps 2 & 3 on the LHS**

WARRANTY

1. Please note that modifications or alterations made to any product manufactured by Maxe to enable fitment in conjunction with other vehicle accessories including modifications made to fit lift kits, tonneau covers, etc. and including the any trimming of bars, will void any claims against the manufacturer.
2. Fitment of a Maxe product must be carried out in accordance to the steps specified in the fitting instructions and the correct torque settings must be applied. Failure to comply with these fitting instructions will negate any claims against the manufacturer.
3. Claims will not be entertained if they result from normal wear and tear (e.g.. Stone chips, abrasive cleaning, industrial fallout resulting in contamination, etc.)

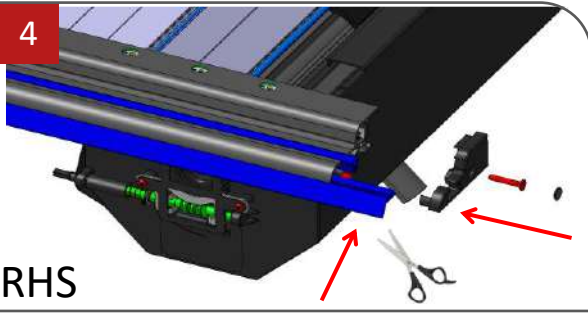


Figure 4

- **Trim off the excess sill rubber seal on the RH & LH Side rails.** (Trim so seal is 10mm longer than the aluminium)
- See Step 5 & 6 below.

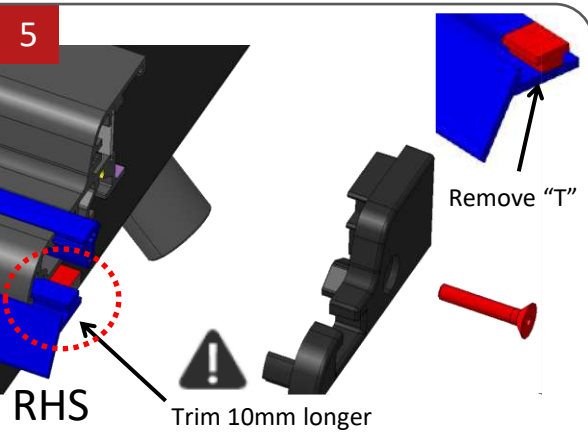


Figure 5

- **Trim off the excess sill rubber seal on the RH & LH Side rails.** (Trim so seal is 10mm longer than the aluminium)
- Next cut out the "T" section of the seal so that the Plastic cap fits into the Side rail.

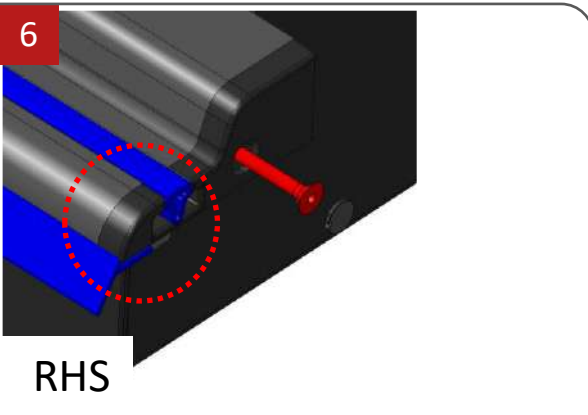


Figure 6

- Once the "T" sections have been cut out on the RH & LH Side rails, place the plastic end caps (PP00492 & PP00493) on making sure that the trimmed seals sit underneath the plastic end caps.
- This gives a nice seal all the way along the Side rail assembly.
- If additional trimming is required, do so before fitting to vehicle.
- Next use the counter sunk M5x30mm screws from **FS00528** and the small round plastic cap to cover the screw head.
- **Repeat Steps on the LHS**

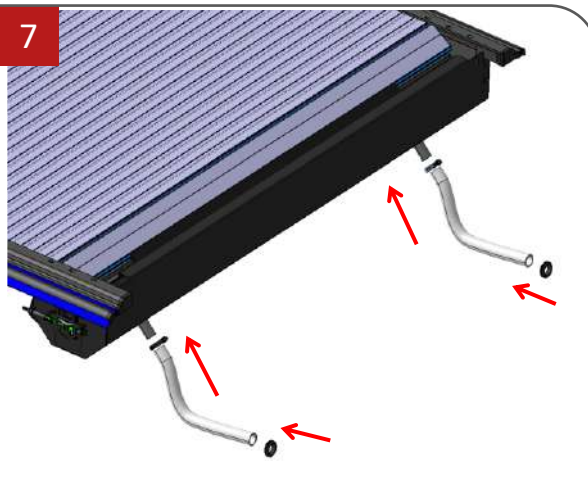


Figure 7

- Locate the two drainage outlet pipes on the front underside of the steel canister.
- Cover the two drainage outlet pipes with the supplied clear PVC tubing.
- Feed the supplied hose clamps from fastener set **FS00551** over the PVC tubes.
- Tighten the hose clamps where the PVC tubes meet the drainage pipes to create a seal.
- Locate the two rubber grommets supplied in the fastener set **FS00551**, fit them over the open ends of the PVC tubes.

WARRANTY

1. Please note that modifications or alterations made to any product manufactured by Maxe to enable fitment in conjunction with other vehicle accessories including modifications made to fit lift kits, tonneau covers, etc. and including the any trimming of bars, will void any claims against the manufacturer.
2. Fitment of a Maxe product must be carried out in accordance to the steps specified in the fitting instructions and the correct torque settings must be applied. Failure to comply with these fitting instructions will negate any claims against the manufacturer.
3. Claims will not be entertained if they result from normal wear and tear (e.g.. Stone chips, abrasive cleaning, industrial fallout resulting in contamination, etc.)

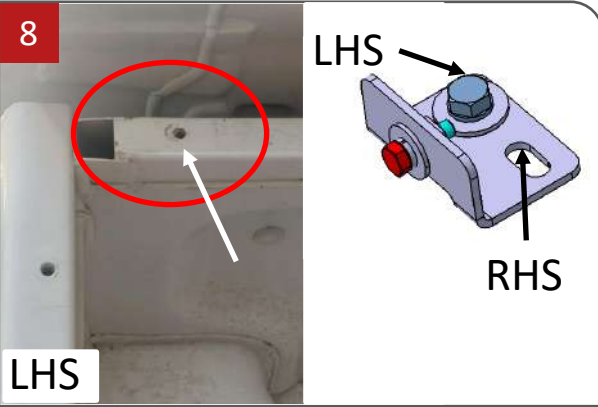


Figure 8

- Before applying the front brackets, wipe the top surface of the bin sill with thinners or a surface preparation cleaner to ensure the surface is clean.
- Place the bracket on as shown in **Figure 8**. Use the supplied fasteners from **FS00595**.
- Repeat this process on the opposite side.



Figure 9

- Remove one top-level grommet on the rear side (Tailgate end) of the bin on the RHS as shown.
- Repeat the above step on the LHS

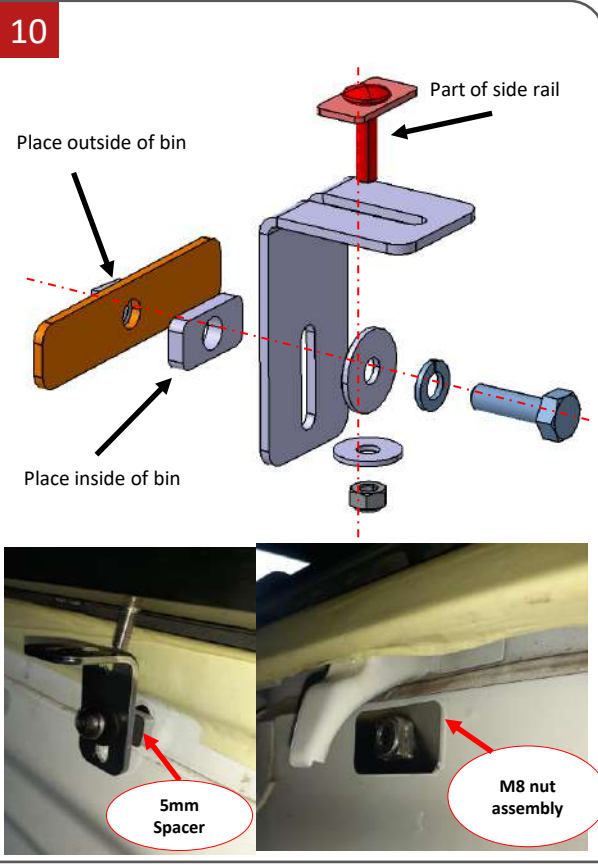


Figure 10

- Find the following parts supplied in the fitting kit:
- 5mm spacers, M8 Nut plates, mounting brackets M8 fasteners from **FS00595**
- Place the mounting bracket side with the short slot against the bin(make sure the short slot is directly in line with the mounting holes shown in **Figure 9**).
- The 5mm spacer) must be placed between the mounting bracket and the vehicle bin in line with the short slot and mounting hole as shown in **Figure 10**.
- Loosely fasten the mounting bracket to the bin using the M8 set screw, spring washer, flat washer, 5mm spacer and M8 nut plate assembly(placed on the outside of vehicle bin – keep nut plate assembly in horizontal position as shown).
- Repeat the above steps for opposite side.

WARRANTY

1. Please note that modifications or alterations made to any product manufactured by Maxe to enable fitment in conjunction with other vehicle accessories including modifications made to fit lift kits, tonneau covers, etc. and including the any trimming of bars, will void any claims against the manufacturer.
2. Fitment of a Maxe product must be carried out in accordance to the steps specified in the fitting instructions and the correct torque settings must be applied. Failure to comply with these fitting instructions will negate any claims against the manufacturer.
3. Claims will not be entertained if they result from normal wear and tear (e.g.. Stone chips, abrasive cleaning, industrial fallout resulting in contamination, etc.)

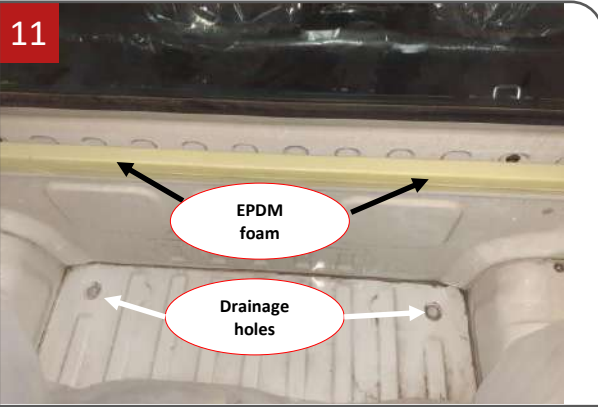


Figure 11

- Before applying the EPDM strip, wipe the top surface of the bin sill with thinners or a surface preparation cleaner to ensure maximum adhesion.
- Stick down the long foam strip (30mmx30mm) over both front brackets and trim off extra length.
- Be sure to place the foam strip so that the RH & LH side lengths are equal.
- Later on, the Side rails will be placed on top of this foam seal to create a barrier for water resistance.
- Locate the 2 drainage holes covered with grommets on the bin floor and widen them to 32mm holes using a hole saw.



Figure 12

- Lift the preassembled Rollatop over the bin of the vehicle with one person on either side and the canister at the front of the bin.
- Align the canister with the front bin sill and the side rails with the side bin sills.
- Lower the assembly into position ensuring each corner of the assembly meets the corners of the bin sill.

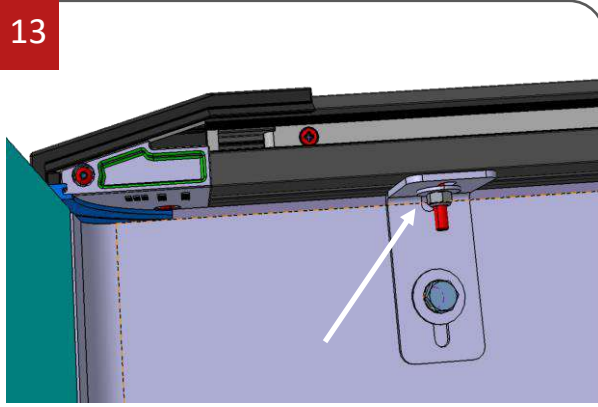
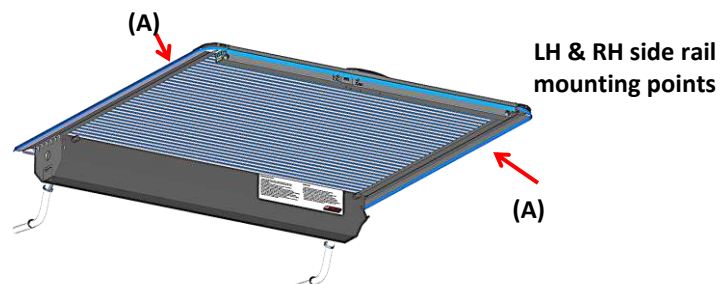
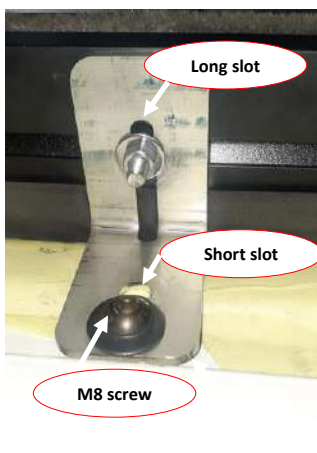


Figure 13

- Locate the RH side and LH side rear brackets
- Locate the slot on the underside of the Side rail.
- Find the M6x25 CUP SQUARE bolt and feed the bolt through the slot at the top of the bracket, place a washer and M6 locknut on.
- Fasten the rear brackets using the M6 locknut.
- Fasten the M8 bolts once **Step 14** is completed
- Repeat the above steps for the opposite rear bracket.



WARRANTY

1. Please note that modifications or alterations made to any product manufactured by Maxe to enable fitment in conjunction with other vehicle accessories including modifications made to fit lift kits, tonneau covers, etc. and including the any trimming of bars, will void any claims against the manufacturer.
2. Fitment of a Maxe product must be carried out in accordance to the steps specified in the fitting instructions and the correct torque settings must be applied. Failure to comply with these fitting instructions will negate any claims against the manufacturer.
3. Claims will not be entertained if they result from normal wear and tear (e.g.. Stone chips, abrasive cleaning, industrial fallout resulting in contamination, etc.)



Figure 14

- Before fully tightening the 4 Mounting Brackets, measure the distance from the inner edge to inner edge of the side rails across the bin at the front and rear.
- Ensure the two lengths are the same at 1400mm, if not, ensure the tape measure is straight or adjust the side rails to meet this measurement.

Table 1	
Standard side rail cross measurements	
Vehicle:	Millimetre (mm)
Ford Ranger T6 / T7	1400 mm
Toyota Hilux	1400 mm
Isuzu D-Max RG06	1430 mm
P-Series GWM	1405 mm
Mazda BT50	1430 mm
Mahindra Karoo	1400 mm
Ford Ranger P703	1320 mm
Nissan Navara H60	1360 mm
VW Amarok J73	1320 mm

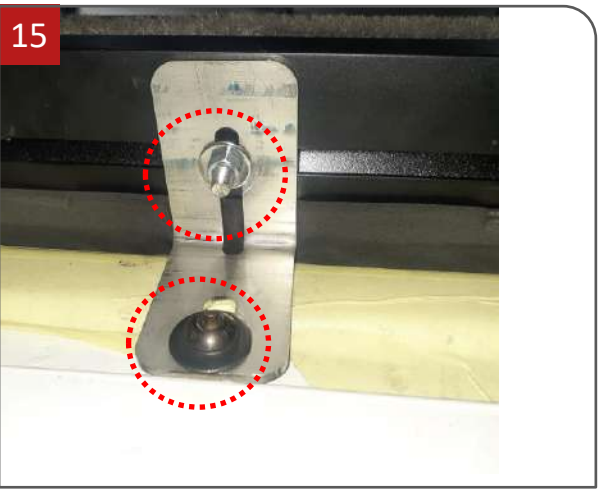


Figure 15

- Once the measurement is achieved, tightly fasten the M6x25 CUP SQUARE bolts and the M8x25mm set screw on each of the 4 Mounting Brackets.



Figure 16

- Open and close the Rolla Top to ensure free movement.
- If the Rollatop gets stuck during opening or closing, check the orientation and placement of each Mounting Bracket assembly as well as the spacing measurement between side rails at the front and back of the bin. (see **Figures 14 & 15**)

What to do if the Rollatop gets stuck during opening or closing:

- Check the height setting of the rear brackets.
- Check the cross dimensional measurements. See **Table 1** in **Step 14**.
- Check gap between tailgate top and underside of rear aluminium profile. This should be not less than 8mm.
- Lastly the tension spring can be set. See **Step 18**

See troubleshooting manual for in-depth solutions.

WARRANTY

1. Please note that modifications or alterations made to any product manufactured by Maxe to enable fitment in conjunction with other vehicle accessories including modifications made to fit lift kits, tonneau covers, etc. and including the any trimming of bars, will void any claims against the manufacturer.
2. Fitment of a Maxe product must be carried out in accordance to the steps specified in the fitting instructions and the correct torque settings must be applied. Failure to comply with these fitting instructions will negate any claims against the manufacturer.
3. Claims will not be entertained if they result from normal wear and tear (e.g.. Stone chips, abrasive cleaning, industrial fallout resulting in contamination, etc.)



Figure 17

- Feed the clear rubber tubes with supplied grommets through the drilled holes to allow for drainage. See **Figure 11** for location of holes in bin.
- Place carabiner hook onto D-shackle at the end of the draw chord.
- Lastly fit the Lid assembly using Fastener set **F500528**

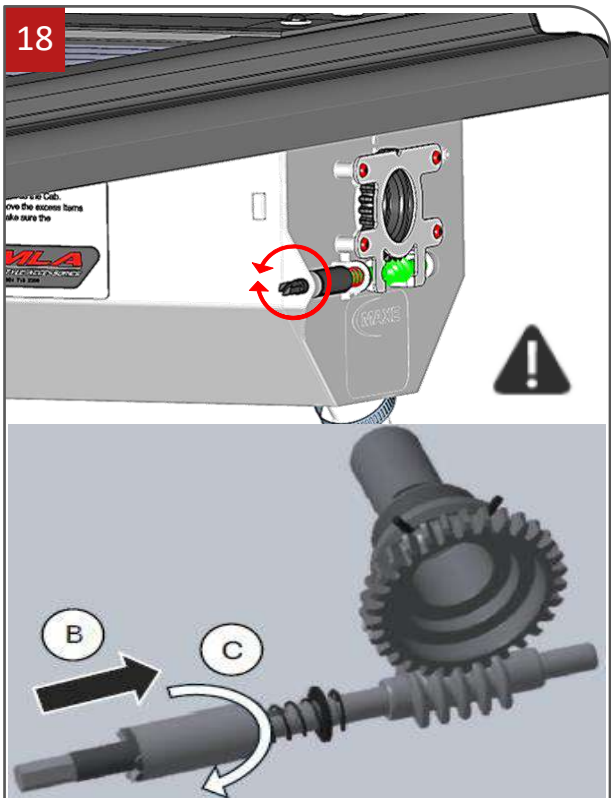
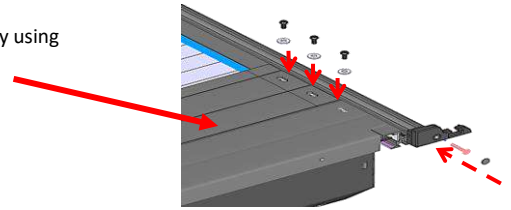


Figure 18



- **Overtightening the main spring will cause damage to the Rollatop. Before tightening it further, make sure nothing else is preventing the Rollatop from operating correctly.**
- Adjusting the main spring in clockwise rotation will increase the tension and make manually closing the cover harder but opening the cover will be easier.
- Then if the opposite is done, adjusting the spring in an anti-clockwise rotation the tension shall be reduced making the cover easier to manually close but opening will become semi-automatic / manually assisted too fully manual.
- **Please note reducing the tension of the main spring too much will cause the Rollatop to be noisy as tension is released the slats become free to bump into the collection cylinder casing & fixed lid. Furthermore, when opening the Rollatop the slats will bunch up and jam during opening due to not enough tension on the main spring.**
- Adjust the tension in increments, a cordless drill with a 7mm socket may be used. Try rotating the index tensioning pin by ten (10) rotations and then try closing and opening the Rollatop. If the result isn't satisfactory then try adjusting the tension further.
- **If damage has been done and the collection cylinder tensioning system needs to be replaced. Please contact Maxe or your dealer for replacement parts.**



WARRANTY

1. Please note that modifications or alterations made to any product manufactured by Maxe to enable fitment in conjunction with other vehicle accessories including modifications made to fit lift kits, tonneau covers, etc. and including the any trimming of bars, will void any claims against the manufacturer.
2. Fitment of a Maxe product must be carried out in accordance to the steps specified in the fitting instructions and the correct torque settings must be applied. Failure to comply with these fitting instructions will negate any claims against the manufacturer.
3. Claims will not be entertained if they result from normal wear and tear (e.g.. Stone chips, abrasive cleaning, industrial fallout resulting in contamination, etc.)