

Vehicle: NISSAN NAVARA DBL CAB

Product: Rolla Top

Part No: NAVA021DCRCV1B

Rev No: 002 Date: 21-10-2024

Doc No: FI000658 Rev2



45 Min

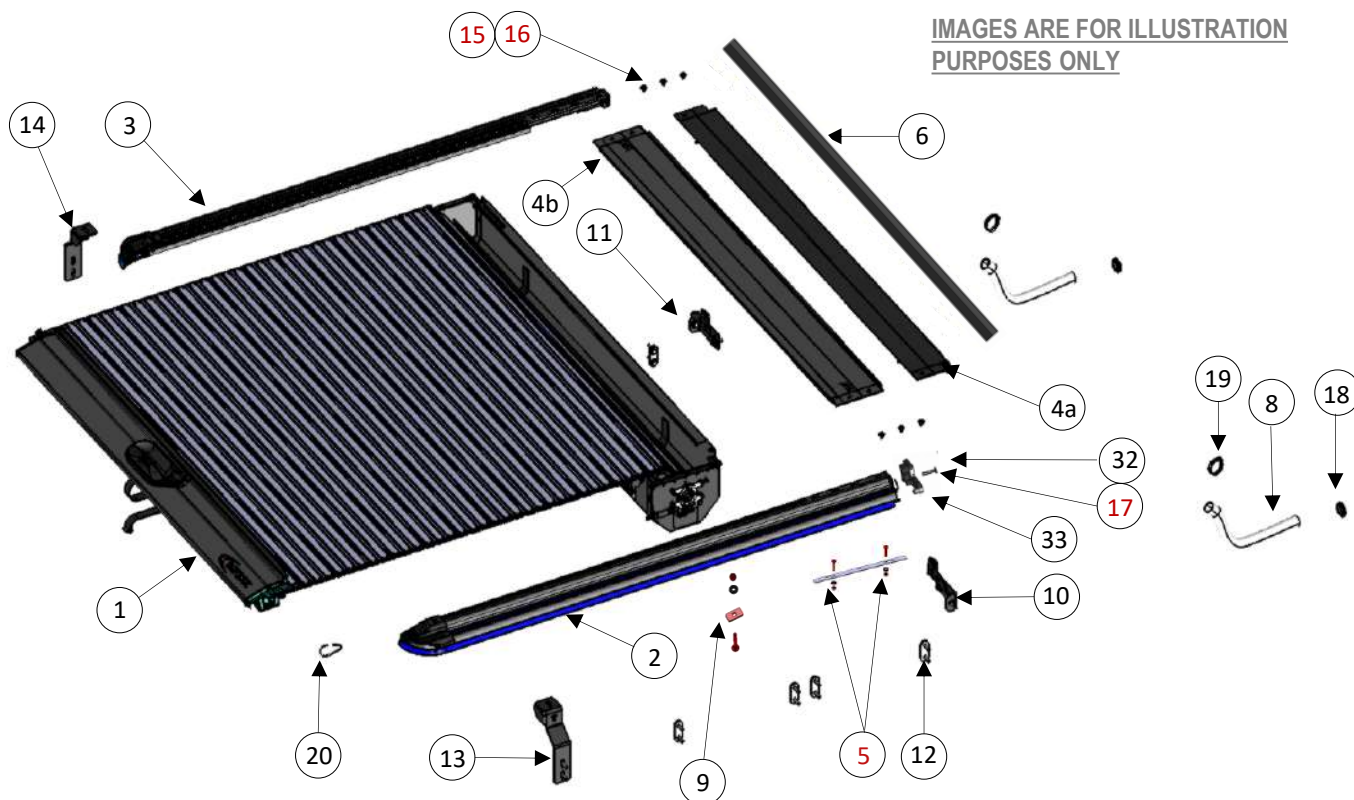


2

**VERY IMPORTANT**

PLEASE READ THESE INSTRUCTIONS CAREFULLY BEFORE COMMENCING WITH FITMENT

**TORQUE SETTINGS:** M5 = 5 Nm M6 = 9 Nm M8 = 22 Nm M10 = 42 Nm M12 = 73 Nm M16 = 178 Nm



IMAGES ARE FOR ILLUSTRATION PURPOSES ONLY

**ASSEMBLY CONTENT**

- 1 1x - AS03444 - COLLECTION CYLINDER UNIT
- 2 1x - AS03426 - SIDE RAIL RH 1450mm
- 3 1x - AS03430 - SIDE RAIL LH 1450mm
- 4 1x - AS03440 - LID ASSEMBLY 1415mm
- 4a 1x - PE00130 - LID EXTRUSION FRONT
- 4b 1x - PE00134 - LID EXTRUSION BACK
- 5 1x - AF00266 - SIDE RAIL ASSEMBLY FASTENER SET
- 6 1x - XM0920 - FOAM STRIP - 30mmX30mmX1600mm
- 7 1x - FK00737 - FITTING KIT - NAVARA DOUBLE CAB

FASTENERS (FS00528 REV1)

- 15 6x - RM00347 - M6x16x1.6 FLAT WASHER
- 16 6x - RM00484 - M6x12 BUTTON HEAD CAP SCREW
- 17 2x - RM00650 - M5x30 COUNTERSUNK SET SCREW

FASTENERS (FS00551 REV1)

- 18 2x - XM0772 - GROMMET
- 19 2x - XM0769 - HOSE CLAMP
- 20 1x - XM0768 - CARABINER
- 21 2x - RM00138 - 6mm SPRING WASHER
- 22 2x - RM00106 - M6 NYLON LOCK NUT
- 23 4x - RM00113 - M8 HD SPRING WASHER
- 24 22x - RM00116 - M8 X 22 X 1.6 A2 WASHER
- 25 8x - RM00122 - M8 X 25 A2 HEX BOLT
- 26 2x - RM00286 - M6 X 16 X 1.6 WASHER
- 27 2x - RM00302 - M6 X 20 HEX SETS
- 28 2x - RM00573 - M8 X 25 X 3 A2 WASHER
- 29 20x - RM00114 - M8 X 30 HEX SETS
- 30 4x - RM00605 - M8 X 25 X 2 A2 WASHERS
- 31 2x - RM00741 - M6x25 CUP SQUARE

FASTENERS (FS00590 REV1)

CONTENTS (FK00737 REV3)

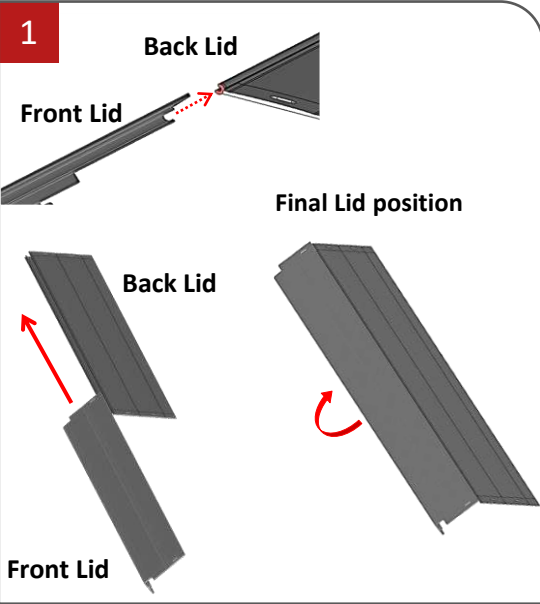
- 8 2x - PG00242 - CLEAR PVC TUBE
- 9 2x - PS06993 - M6 NUT PLATE
- 10 1x - AS03949 - RH LOADBODY ASSEMBLY BRACKET FRONT
- 11 1x - AS03950 - LH LOADBODY ASSEMBLY BRACKET FRONT
- 12 8x - PS05361 - NISSAN NAVARA RAIL SPACER
- 13 1x - PS06149 - RH LOADBODY BRACKET REAR
- 14 1x - PS06150 - LH LOADBODY BRACKET REAR
- 32 2x - PP00495 - END CAP PLUG
- 33 1x - PP00492 - RAIL END CAP RH
- 34 1x - PP00493 - RAIL END CAP LH
- 35 1x - XM0958 - KITTING BOX (900mm X110mm X60mm)
- 36 1x - XM0892 - ZIP LOCK BAG (40mm x 60mm)
- 37 1x - **FI00658 REV2 - FITTING INSTRUCTION**
- 38 1x - FS00528 REV1 - FASTENER SET
- 39 1x - FS00551 REV1 - FASTENER SET
- 40 1x - FS00590 REV1 - FASTENER SET

**TOOLS REQUIRED**

- Stanley knife / scissors
- 10mm & 13mm spanner
- 4mm / 5mm / 6mm Allen key sockets
- Torque set
- Drill & 32.0mm hole saw
- Loctite 243
- Socket set
- Tape measure

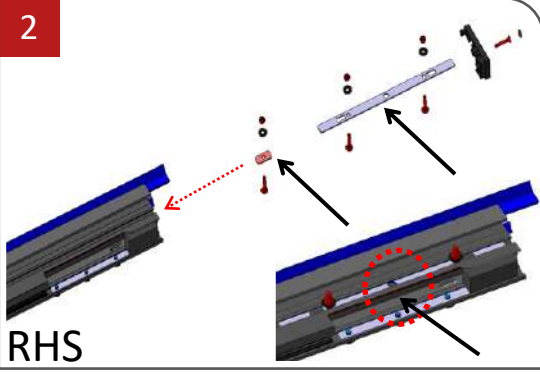
PACKER: \_\_\_\_\_

DATE: D M Y



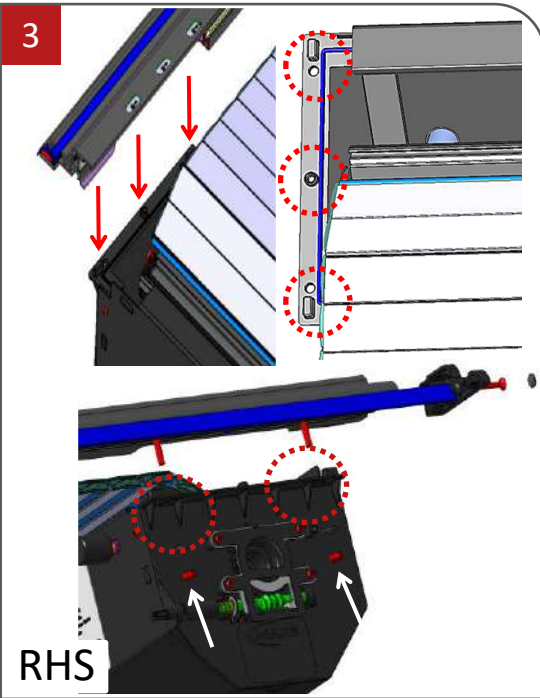
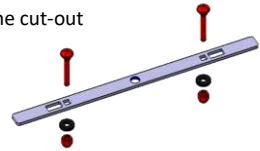
**Figure 1**

- Unpack the Rollatop kit and check that contents have been correctly supplied.
- Align the front lid and back lid to along the two pieces to interlock. Slide the front lid along the back lid until it is flush with the opposite side.
- Rotate the front lid until it locks into place with the back lid and both lids are flat.



**Figure 2**

- Locate & assemble the M6x25 CUP SQUARE bolts with the square holes in the plates before sliding them into the slot on the underside of the side rail.
- Insert PS06993 (short) first followed by PS06994 (Long)
- Slide the canister locking plate so the centre hole aligns with the cut-out round notch on the underside of the Aluminium profile.

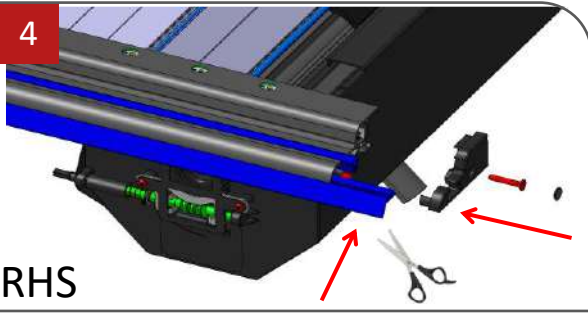


**Figure 3**

- Locate the 3 mounting points on the RHS of the canister.
- Feed the Slats and the Lock housing into the Side rail channel.
- Position the RH Side rail above the canister where the canister locking plate aligns with the 3 canister mounting points.
- Secure the Side rail with two M6 lock nuts and washers.
- **Repeat Steps 2 & 3 on the LHS**

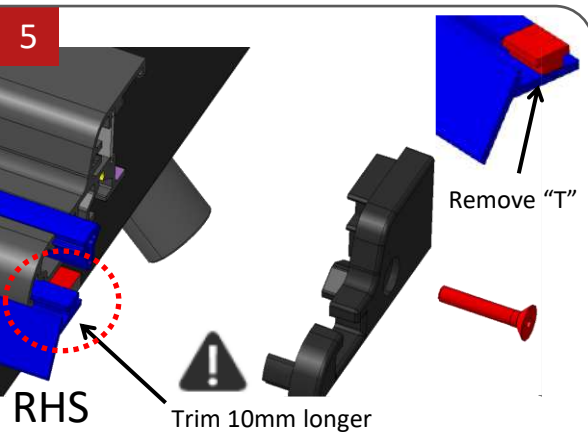
**WARRANTY**

1. Please note that modifications or alterations made to any product manufactured by Maxe to enable fitment in conjunction with other vehicle accessories including modifications made to fit lift kits, tonneau covers, etc. and including the any trimming of bars, will void any claims against the manufacturer.
2. Fitment of a Maxe product must be carried out in accordance to the steps specified in the fitting instructions and the correct torque settings must be applied. Failure to comply with these fitting instructions will negate any claims against the manufacturer.
3. Claims will not be entertained if they result from normal wear and tear (e.g.. Stone chips, abrasive cleaning, industrial fallout resulting in contamination, etc.)



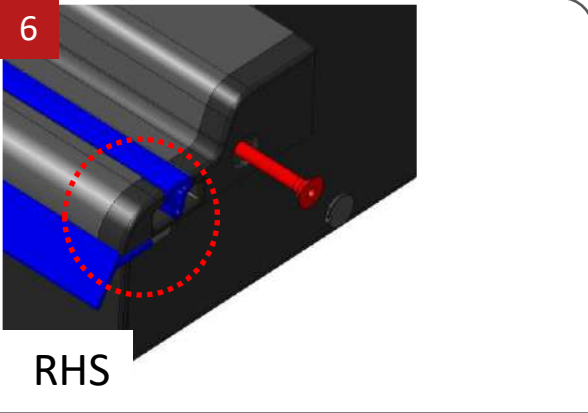
**Figure 4**

- Trim off the excess sill rubber seal on the RH & LH Side rails. (Trim so seal is 10mm longer than the aluminium)
- See Step 5 & 6 below.



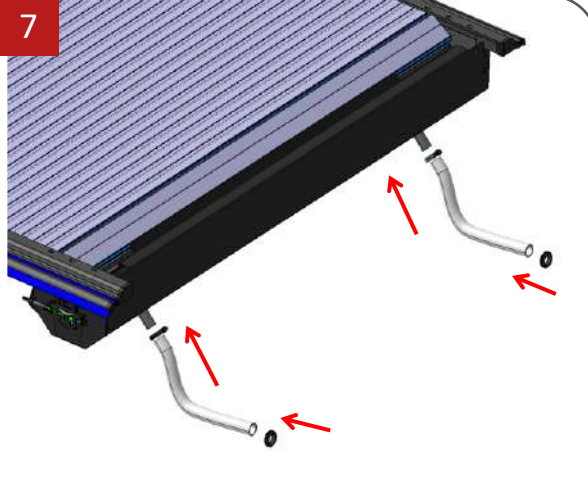
**Figure 5**

- Trim off the excess sill rubber seal on the RH & LH Side rails. (Trim so seal is 10mm longer than the aluminium)
- Next cut out the "T" section of the seal so that the Plastic cap fits into the Side rail.



**Figure 6**

- Once the "T" sections have been cut out on the RH & LH Side rails, place the plastic end caps (PP00492 & PP00493) on making sure that the trimmed seals sit underneath the plastic end caps.
- This gives a nice seal all the way along the Side rail assembly.
- If additional trimming is required, do so before fitting to vehicle.
- Next use the counter sunk M5x30mm screws from **FS00528** and the small round plastic cap to cover the screw head.
- Repeat Steps on the LHS



**Figure 7**

- Locate the two drainage outlet pipes on the front underside of the steel canister.
- Cover the two drainage outlet pipes with the supplied clear PVC tubing.
- Feed the supplied hose clamps from fastener set **FS00551** over the PVC tubes.
- Tighten the hose clamps where the PVC tubes meet the drainage pipes to create a seal.
- Locate the two rubber grommets supplied in the fastener set **FS00551**, fit them over the open ends of the PVC tubes.

**WARRANTY**

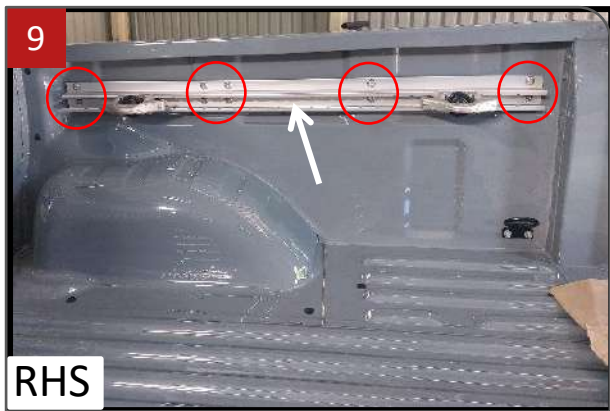
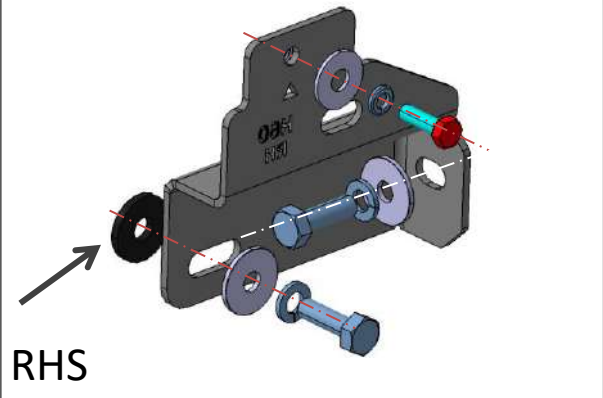
1. Please note that modifications or alterations made to any product manufactured by Maxe to enable fitment in conjunction with other vehicle accessories including modifications made to fit lift kits, tonneau covers, etc. and including the any trimming of bars, will void any claims against the manufacturer.
2. Fitment of a Maxe product must be carried out in accordance to the steps specified in the fitting instructions and the correct torque settings must be applied. Failure to comply with these fitting instructions will negate any claims against the manufacturer.
3. Claims will not be entertained if they result from normal wear and tear (e.g.. Stone chips, abrasive cleaning, industrial fallout resulting in contamination, etc.)



**Figure 8**

- Before applying the right-hand & left-hand side front brackets, wipe the top surface of the bin sill with thinners or a surface preparation cleaner to ensure the surface is clean.
- Place the bracket on as shown in **Figure 8**. Use the supplied fasteners from **FS00590**.
- **Repeat this process on the opposite side LHS.**

Bracket image for visual purposes only



**Figure 9**

- Locate the tie downside hooks on the inside of the bin at the LH and RH side of the tail gate.
- If the bolts of the tie downside rails are covered by rubberising, then remove rubberising by carefully cutting the rubber with a Stanley blade to access the bolts.



**Figure 10**

- Loosen all 10 RHS & 10 LHS M8 torque screws and detached the tie downside rails from the bin.
- The M8 bolts can be reused, or new bolts used which are supplied in **FS00590**.
- **Repeat this process on the opposite side.**

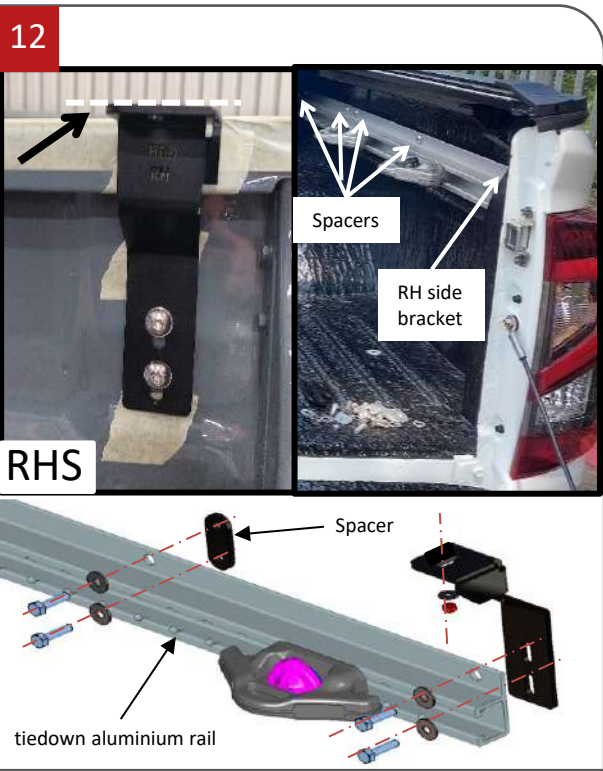
**WARRANTY**

1. Please note that modifications or alterations made to any product manufactured by Maxe to enable fitment in conjunction with other vehicle accessories including modifications made to fit lift kits, tonneau covers, etc. and including the any trimming of bars, will void any claims against the manufacturer.
2. Fitment of a Maxe product must be carried out in accordance to the steps specified in the fitting instructions and the correct torque settings must be applied. Failure to comply with these fitting instructions will negate any claims against the manufacturer.
3. Claims will not be entertained if they result from normal wear and tear (e.g.. Stone chips, abrasive cleaning, industrial fallout resulting in contamination, etc.)



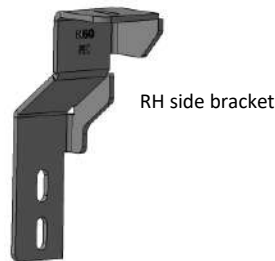
**Figure 11**

- Identify the LH load bracket and the RH load bracket, brackets have identification marks RH & LH.
- If your vehicle has a tie down rails use the rail spacers shown in **Figure 12**.
- Repeat the above process for the opposite side.



**Figure 12**

- To mount the load body bracket, use the original mounting points.
- Mount the RH load bracket to the RH mounting point as shown below. Align the top of the load bracket with the top bin sill.
- Secure the load bracket by fastening the two M8x25mm bolts.
- Repeat this process on the process on the LH load bracket to the LH mounting point.
- There are 8x spacers in the fitting kit. These are used behind the vehicle tie-down aluminium rail. Use 4x on the RH side rail and the other 4x on the LH side rail. M8x25mm bolts are supplied fasteners from **FS00590**.
- **If your vehicle doesn't have these tie down rails them disregard the 8x spacers as they are not required.**



**Figure 13**

- Before applying the EPDM strip, wipe the top surface of the bin sill with thinners or a surface preparation cleaner to ensure maximum adhesion.
- Place the strip of EPDM foam along the front of the bin. Adhere the foam by removing the backing packing and pressing the foam against the sill of the bin.
- Using a Stanley knife carefully cut off the excess foam as shown in **Figure 13**.
- Later on, the Side rails will be placed on top of this foam seal to create a barrier for water resistance.

**WARRANTY**

1. Please note that modifications or alterations made to any product manufactured by Maxe to enable fitment in conjunction with other vehicle accessories including modifications made to fit lift kits, tonneau covers, etc. and including the any trimming of bars, will void any claims against the manufacturer.
2. Fitment of a Maxe product must be carried out in accordance to the steps specified in the fitting instructions and the correct torque settings must be applied. Failure to comply with these fitting instructions will negate any claims against the manufacturer.
3. Claims will not be entertained if they result from normal wear and tear (e.g.. Stone chips, abrasive cleaning, industrial fallout resulting in contamination, etc.)

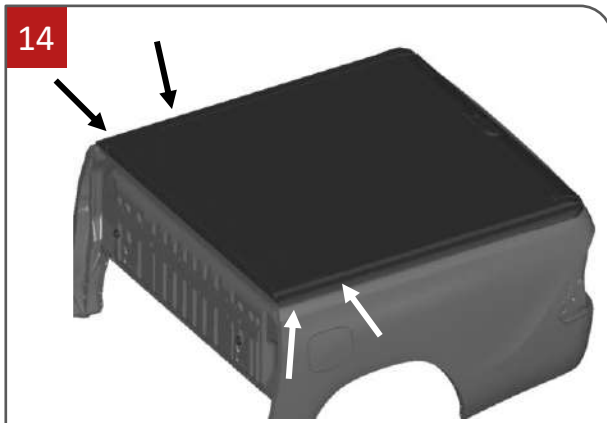


Figure 14



- **This step requires two people, lift the preassembled Rollatop over the bin of the vehicle with a person on either side and the Canister at the front of the bin.**
- Lift the preassembled Rollatop in the areas shown in **Figure 14**.
- Align the Canister with the front bin sill and the side rails with the side bin sills.
- Lower the assembly into position ensuring each corner of the assemble meets the corners of the bin sill.

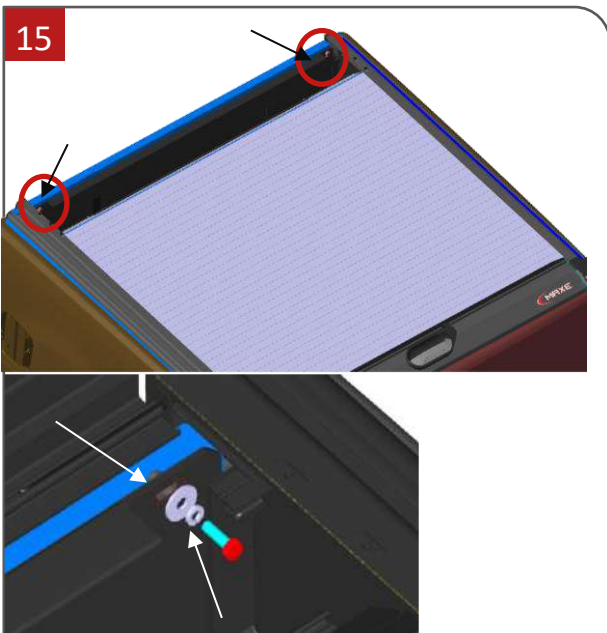


Figure 15

**Fitment on to the front load body brackets**

- Align the slots on the front of the Collection cylinder to the brackets installed in **Step 8**.
- Tighten the Collection cylinder to the long bracket with the two M6x25mm Hex bolts, spring washers and washers from fastener set **FS00590**.
- Once completed the lid assembly can be installed into position on top of the Rollatop.

**WARRANTY**

1. Please note that modifications or alterations made to any product manufactured by Maxe to enable fitment in conjunction with other vehicle accessories including modifications made to fit lift kits, tonneau covers, etc. and including the any trimming of bars, will void any claims against the manufacturer.
2. Fitment of a Maxe product must be carried out in accordance to the steps specified in the fitting instructions and the correct torque settings must be applied. Failure to comply with these fitting instructions will negate any claims against the manufacturer.
3. Claims will not be entertained if they result from normal wear and tear (e.g.. Stone chips, abrasive cleaning, industrial fallout resulting in contamination, etc.)

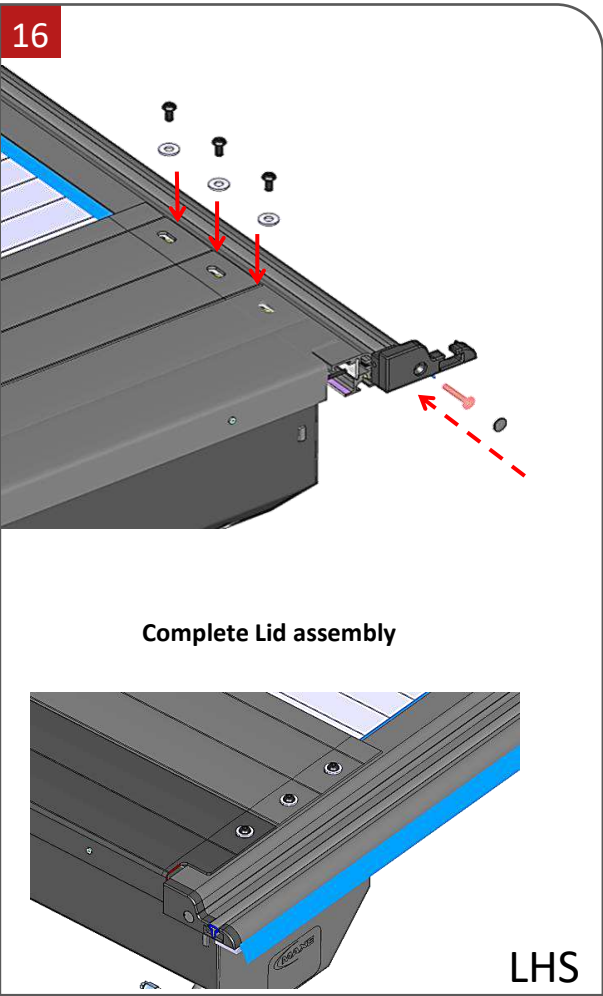


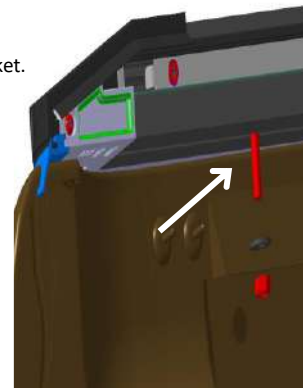
Figure 16

- Using the supplied lid fastener set **FS00528** to secure the Lid to the Side rails.
- Using three M6x12mm button head cap screws and washers for each side, tighten down the Lid on either side.



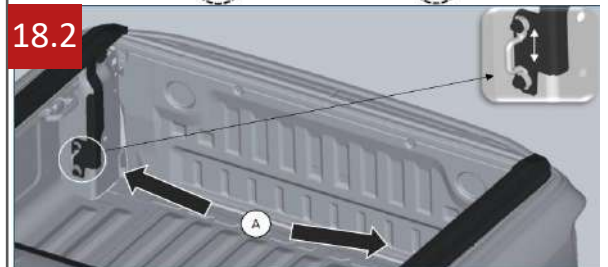
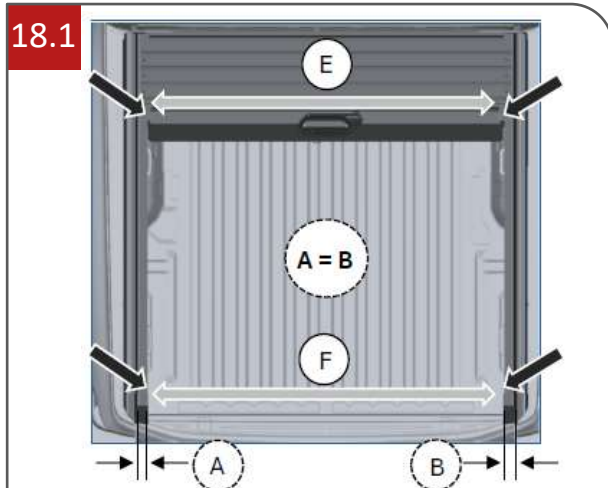
Figure 17

- Locate the RH side and LH side rear brackets
- Locate the slot on the underside of the Side rail.
- Find the M6x25 CUP SQUARE bolt and feed the bolt through the slot at the top of the bracket, place a washer and M6 locknut on.
- Fasten the rear brackets using the M6 locknut.
- Fasten the M8 bolts once **Step 18.2** is completed
- Repeat the above steps for the opposite rear bracket.



**WARRANTY**

1. Please note that modifications or alterations made to any product manufactured by Maxe to enable fitment in conjunction with other vehicle accessories including modifications made to fit lift kits, tonneau covers, etc. and including the any trimming of bars, will void any claims against the manufacturer.
2. Fitment of a Maxe product must be carried out in accordance to the steps specified in the fitting instructions and the correct torque settings must be applied. Failure to comply with these fitting instructions will negate any claims against the manufacturer.
3. Claims will not be entertained if they result from normal wear and tear (e.g.. Stone chips, abrasive cleaning, industrial fallout resulting in contamination, etc.)



**Figure 18**

- Before fully tightening the rear brackets measure the internal width of the Side rails.
- Measure between the side rail just after the fixed Lid profile.
- Use this measurement to re-align the side rails at the back.
- Ensure that measurement E = F.
- See **Table 1** for standard measurements. (E=F)
- RollaTop is centred (A=B).

| Table 1                               |                 |
|---------------------------------------|-----------------|
| Standard side rail cross measurements |                 |
| Vehicle:                              | Millimetre (mm) |
| Ford Ranger T6 / T7                   | 1400 mm         |
| Toyota Hilux                          | 1400 mm         |
| Isuzu D-Max RG06                      | 1430 mm         |
| P-Series GWM                          | 1405 mm         |
| Mazda BT50                            | 1430 mm         |
| Mahindra Karoo                        | 1400 mm         |
| Ford Ranger P703                      | 1320 mm         |
| Nissan Navara H60                     | 1360 mm         |
| VW Amarok J73                         | 1320 mm         |



- Ensure that the vertical gap between the underside of the rear profile and the top surface of the tailgate in a closed position is 10mm as shown in **Figure 18.2**.
- **If this gap isn't correct opening & closing of the tailgate & Rollatop will be difficult.**

### WARRANTY

1. Please note that modifications or alterations made to any product manufactured by Maxe to enable fitment in conjunction with other vehicle accessories including modifications made to fit lift kits, tonneau covers, etc. and including the any trimming of bars, will void any claims against the manufacturer.
2. Fitment of a Maxe product must be carried out in accordance to the steps specified in the fitting instructions and the correct torque settings must be applied. Failure to comply with these fitting instructions will negate any claims against the manufacturer.
3. Claims will not be entertained if they result from normal wear and tear (e.g.. Stone chips, abrasive cleaning, industrial fallout resulting in contamination, etc.)





**Figure 19**

- Neatly trim off a **triangular shape 30mm** long from the load bin seal to prevent clash with tailgate as shown in **Figure 19**, repeat for LHS.
- Open and close the Rollatop & tailgate to ensure free movement.

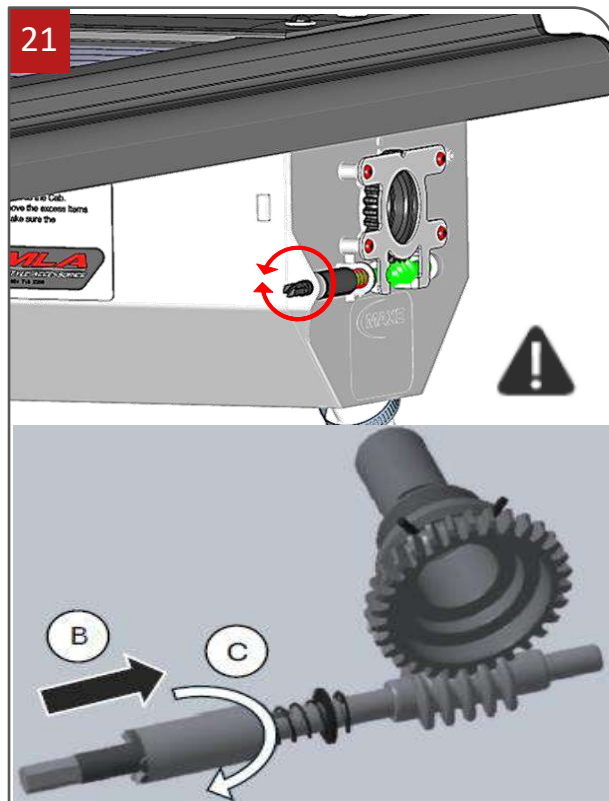
What to do if the Rollatop gets stuck during opening or closing:

- Check the height setting of the rear brackets.
- Check the cross dimensional measurements. See **Table 1** in **Step 18**.
- Check gap between tailgate top and underside of rear aluminium profile. This should be not less than 10mm.
- Lastly the tension spring can be set. See **Step 21**



**Figure 20**

- Locate the position of the grommets on this inside of the bin against the front wall as shown in **Figure 20**.
- Drill through the bin wall to create a 32,0mm hole alternatively if your vehicle has rubber grommet inserts use a Stanley blade to cuts an "X" shape hole.
- The original vehicle grommets can be used or replaced with the supplied grommets from the Kitting package.
- Feed the clear PVC tubes through the holes / grommets to allow for drainage.
- Place the carabiner hook onto D-shackle at the end of the draw chord & attach to rear bracket.



**Figure 21**

- **Overtightening the main spring will cause damage to the Rollatop. Before tightening it further, make sure nothing else is preventing the Rollatop from operating correctly.**
- Adjusting the main spring in clockwise rotation will increase the tension and make manually closing the cover harder but opening the cover will be easier.
- Then if the opposite is done, adjusting the spring in an anti-clockwise rotation the tension shall be reduced making the cover easier to manually close but opening will become semi-automatic / manually assisted too fully manual.
- **Please note reducing the tension of the main spring too much will cause the Rollatop to be noisy as tension is released the slats become free to bump into the collection cylinder casing & fixed lid. Furthermore, when opening the Rollatop the slats will bunch up and jam during opening due to not enough tension on the main spring.**
- Adjust the tension in increments, a cordless drill with a 7mm socket may be used. Try rotating the index tensioning pin by ten (10) rotations and the try closing and opening the Rollatop. If the result isn't satisfactory then try adjusting the tension further.
- **If damage has been done and the collection cylinder tensioning system needs to be replaced. Please contact Maxe or your dealer for replacement parts.**

**WARRANTY**

1. Please note that modifications or alterations made to any product manufactured by Maxe to enable fitment in conjunction with other vehicle accessories including modifications made to fit lift kits, tonneau covers, etc. and including the any trimming of bars, will void any claims against the manufacturer.
2. Fitment of a Maxe product must be carried out in accordance to the steps specified in the fitting instructions and the correct torque settings must be applied. Failure to comply with these fitting instructions will negate any claims against the manufacturer.
3. Claims will not be entertained if they result from normal wear and tear (e.g.. Stone chips, abrasive cleaning, industrial fallout resulting in contamination, etc.)